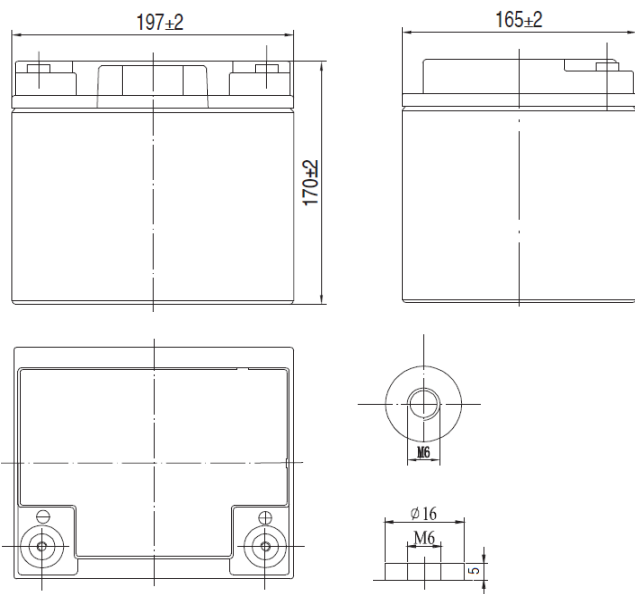


APPLICATIONS

- Solar & Wind power systems
- Power plants
- Uninterruptible Power Supply (UPS)
- Telecommunication Systems
- Electric wheelchairs
- Remote monitoring and controlling
- Solar street lighting
- Water pumping systems



SPECIFICATIONS

Nominal Voltage	12 V	
Number of cells	6	
Cycle Life	Approx. 900 cycles at 50% DoD	
Design Floating Life (20°C)	12 years	
Dimensions	Length	197 mm
	Width	165 mm
	Height	170 mm
	Total Height	170 mm
Weight	13.8 kg	
Nominal Capacity (25°C)	120 hours rate (1.85)	54.0 Ah
	10 hours rate (1.80)	45.5 Ah
	5 hours rate (1.75)	37.8 Ah
	1 hours rate (1.60)	27.3 Ah
Internal Resistance (fully charged, 25°C)	8.5 mOhm	
Self Discharge	approx. 3% per month at 20°C	
Nominal Operating Temperature	25°C	
Operating Temperature range	Discharge	-15°C to 65°C
	Charge	-10°C to 60°C
	Storage	-20°C to 60°C
Float Charging Voltage	2.27 to 2.30 V/cell at 25°C	
Temperature compensation	-18mV/°C	
Cyclic Charging Voltage	2.40 to 2.47 V/cell at 25°C	
Temperature compensation	-30mV/°C	
Maximum charging current	10 A	
Maximum discharge current (25°C)	450 A (5 sec.)	
Short Circuit Current	680 A	

PERFORMANCE DATA

Discharge Constant Current at 25°C (Amperes)

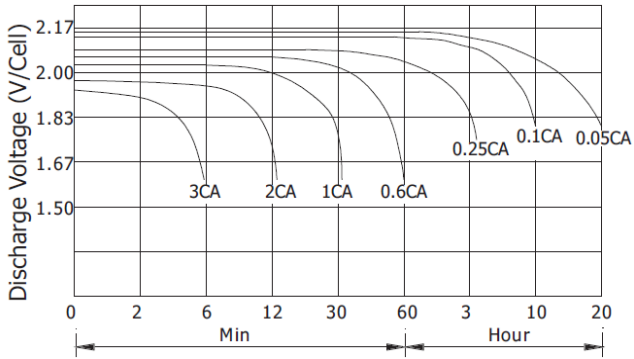
End Voltage (V/cell)	10min	15min	30min	45min	1h	2h	3h	4h	5h	8h	10h	20h	120h
1.60 V	76.9	68.6	43.5	34.9	27.3	16.5	11.3	8.88	7.68	5.49	4.70	2.42	----
1.65 V	73.3	67.6	42.5	34.4	26.9	16.5	11.3	8.83	7.67	5.46	4.66	2.38	----
1.70 V	70.4	64.6	41.3	33.5	26.2	16.4	11.3	8.80	7.58	5.35	4.64	2.36	----
1.75 V	66.7	62.6	40.3	32.4	25.9	16.2	11.2	8.77	7.56	5.35	4.55	2.35	----
1.80 V	62.6	59.6	39.3	31.8	25.6	15.8	11.0	8.71	7.41	5.30	4.55	2.34	0.46
1.85 V	61.6	58.7	38.7	31.3	25.2	15.6	10.8	8.58	7.30	5.23	4.48	2.30	0.45

Discharge Constant Power at 25°C (Watts/Cell)

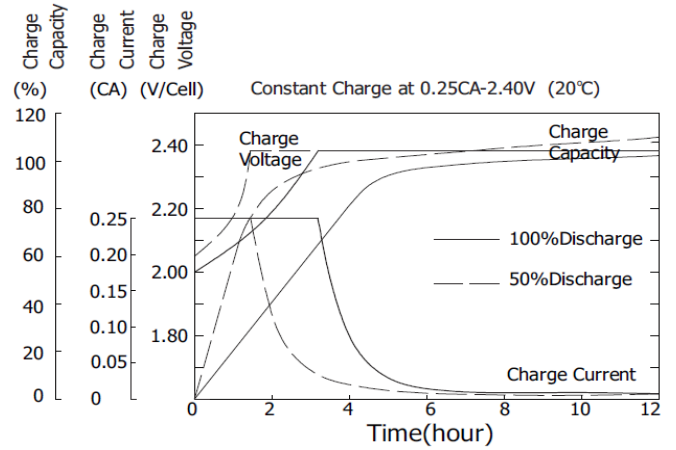
End Voltage (V/cell)	10min	15min	30min	45min	1h	2h	3h	4h	5h	8h	10h	20h	120h
1.60 V	137.0	128.1	82.8	68.0	52.6	32.2	22.4	17.3	15.3	10.9	9.33	4.76	----
1.65 V	132.8	125.1	81.0	66.8	51.7	31.9	22.0	17.2	15.3	10.9	9.20	4.76	----
1.70 V	127.3	120.5	78.5	64.8	50.3	31.5	21.8	17.0	15.1	10.9	9.16	4.75	----
1.75 V	121.8	116.4	76.6	63.5	49.5	31.0	21.6	17.0	15.0	10.7	9.11	4.75	----
1.80 V	115.1	110.3	73.9	61.3	48.0	30.3	20.9	16.5	14.6	10.4	9.04	4.68	0.90
1.85 V	113.4	108.6	72.8	60.4	47.3	29.9	20.6	16.3	14.4	10.2	8.90	4.61	0.89

Note: The above characteristics data can be obtained within three charge/discharge cycles.

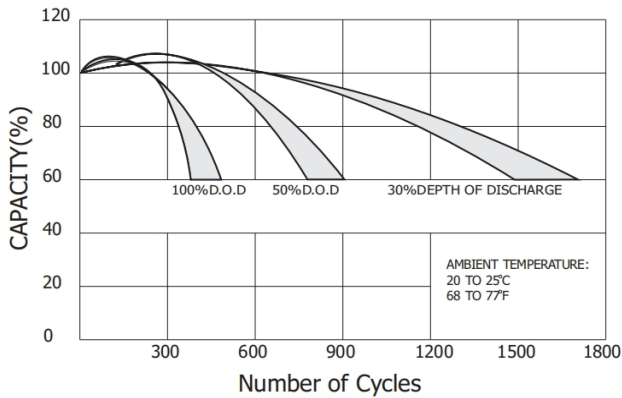
Discharge Characteristics (20°C)



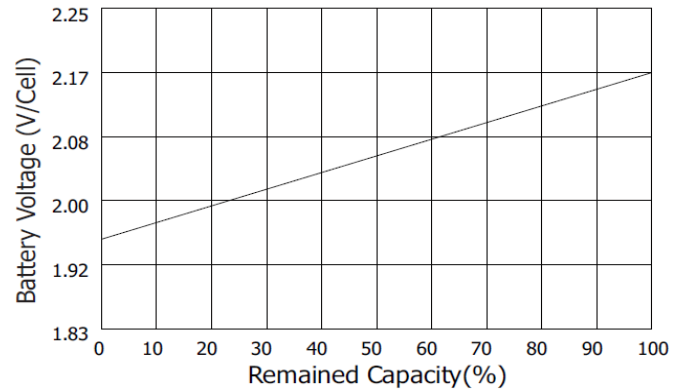
Charging Characteristics (20°C)



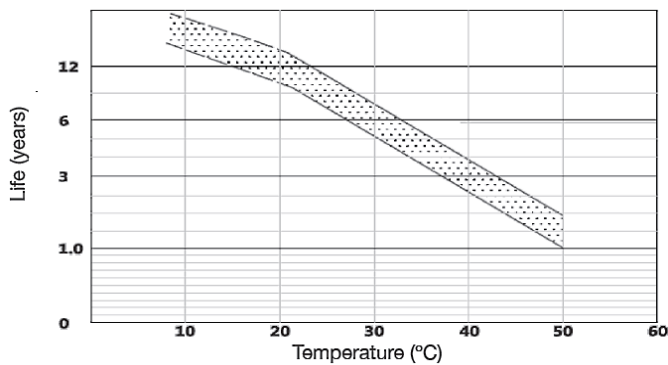
Cycle Service Life in Relation to Depth of Discharge



Relationship Between OCV and Residual Capacity (20°C)



Temperature Effects on Float Life



Self Discharge Characteristics

