

SUNLIGHT AccuForce 12V-95Ah S

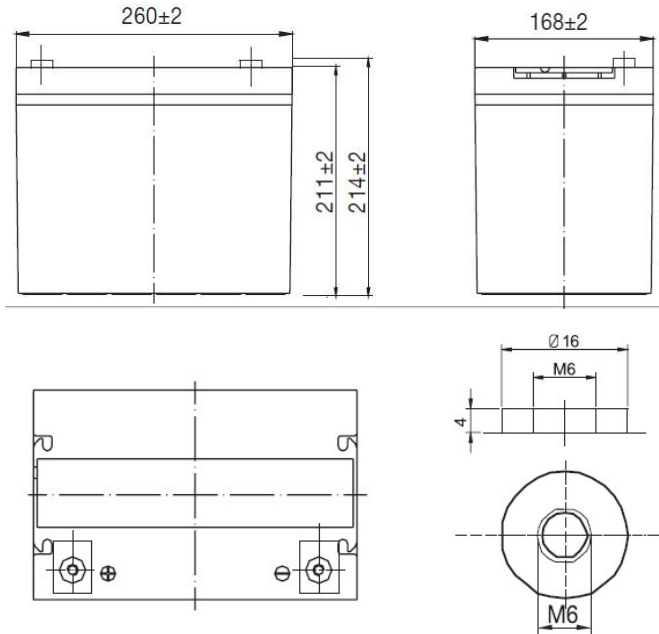
AGM VRLA Battery

Features & Benefits

- Solar / Wind power systems
- Residential installations
- Golf carts and electric powered vehicles
- Marine equipment
- Electric wheelchairs
- Traffic systems (signaling and lighting)
- Remote monitoring and controlling
- Power tools and cleaning machines
- Uninterruptible power supply (UPS)

Specifications

Nominal Voltage	12 V
Number of cells	6
Cycle Life	Approx. 800 cycles at 50% DOD
Dimensions	Length 260 mm
	Width 168 mm
	Height 211 mm
	Total Height 214 mm
Weight	23 kg
	120 hours rate (1.85Vpc) 96.00 Ah
Nominal Capacity (25°C)	100 hours rate (1.85Vpc) 95.00 Ah
	48 hours rate (1.80Vpc) 89.28 Ah
	10 hour rate (1.80Vpc) 80.80 Ah
	Internal Resistance (fully charged, 25°C) 5.5 mOhm
Self Discharge	less than 3% per month at 25°C
Nominal Operating Temperature	25°C
Operating Temperature range	Discharge -15°C to 45°C
	Charge 0°C to 40°C
	Storage -15°C to 40°C
Float Charging Voltage	2.27 to 2.30 V/cell at 25°C
	Temperature compensation -18mV/°C
Cyclic Charging Voltage	2.40 to 2.47 V/cell at 25°C
	Temperature compensation -30mV/°C
Maximum charging current	24 A
Maximum discharge current	850 A (5 sec.)
Short circuit current	1300 A



Performance Data

Discharge Constant Current at 25°C (Amperes)

End Voltage V/cell	15min	30min	1h	2h	3h	4h	5h	6h	8h	10h	20h	48h	72h	100h	120h
1.60 V	135	81.6	50.5	29.5	20.6	16.9	14.4	12.6	9.88	8.24	4.31	---	---	---	---
1.65 V	131	80.0	49.9	29.3	20.5	16.8	14.3	12.5	9.86	8.22	4.30	---	---	---	---
1.70 V	127	77.6	48.6	29.1	20.4	16.7	14.2	12.4	9.78	8.17	4.29	1.89	---	---	---
1.75 V	122	75.6	47.6	28.7	20.2	16.6	14.1	12.3	9.70	8.16	4.27	1.77	1.26	---	---
1.80 V	115	72.9	46.2	28.0	19.6	16.1	13.7	11.9	9.37	8.08	4.24	1.86	1.25	---	---
1.85 V	108	68.7	43.3	26.3	18.4	15.0	12.9	11.2	8.81	7.60	3.99	1.75	1.18	0.95	0.80

Discharge Constant Power at 25°C (Watts/cell)

End Voltage V/cell	15min	30min	1h	2h	3h	4h	5h	6h	8h	10h	20h	48h	72h	100h	120h
1.60 V	247	151	95.8	56.5	40.0	33.0	28.3	24.5	19.7	16.3	8.62	----	----	----	----
1.65 V	241	149	94.7	56.2	39.8	32.7	28.2	24.3	19.5	16.3	8.60	----	----	----	----
1.70 V	232	145	92.3	55.8	39.5	32.3	28.0	24.2	19.3	16.2	8.58	3.77	----	----	----
1.75 V	224	141	90.5	55.2	39.3	32.2	27.7	23.8	19.2	16.2	8.55	3.75	2.53	----	----
1.80 V	212	136	87.8	53.8	38.2	31.5	27.2	23.3	18.5	16.0	8.48	3.72	2.50	----	----
1.85 V	199	128	82.5	50.5	35.8	29.5	25.5	21.9	17.3	15.1	7.98	3.50	2.35	1.90	1.60

SYSTEMS SUNLIGHT S.A.

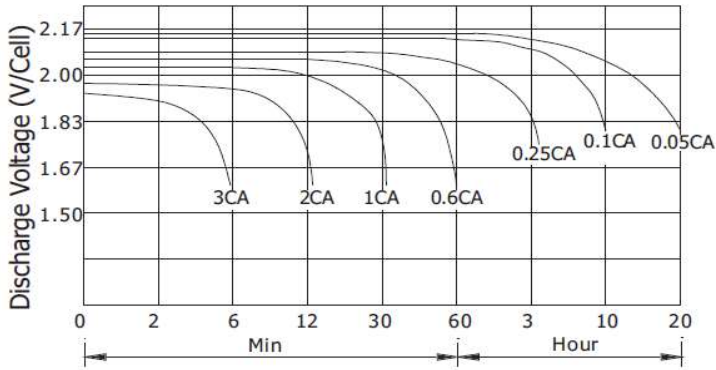
Headquarters 8, Thivaidos & Sfiggos Street | 145 64 Kifissia | Greece
 Manufacturing Plant Neo Olvio | 672 00 Xanthi | Greece
 Recycling Plant Industrial Area of Komotini | 691 00 Komotini | Greece
 Southeast Europe Industrial Sales 14B Menexedon Street | 145 64 Kato Kifissia | Greece

Sunlight Batteries USA Inc. 4755 McConnell Center Drive | Greensboro | NC 27405 | USA
 Sunlight European Battery Assembly 175, Via Stra | 37030 Colognola Ai Colli Verona | Italy
 Sunlight Industrial SRL 111-115, Timisoara Boulevard | 061327 Bucharest | Romania
www.systems-sunlight.com

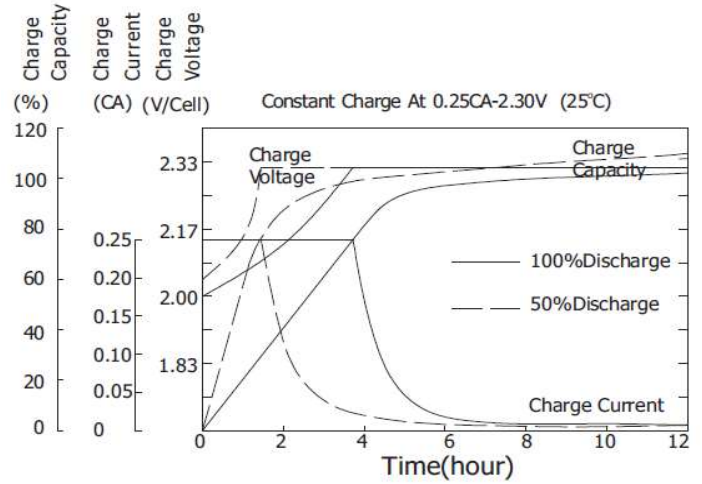
SUNLIGHT AccuForce 12V-95Ah S

AGM VRLA Battery

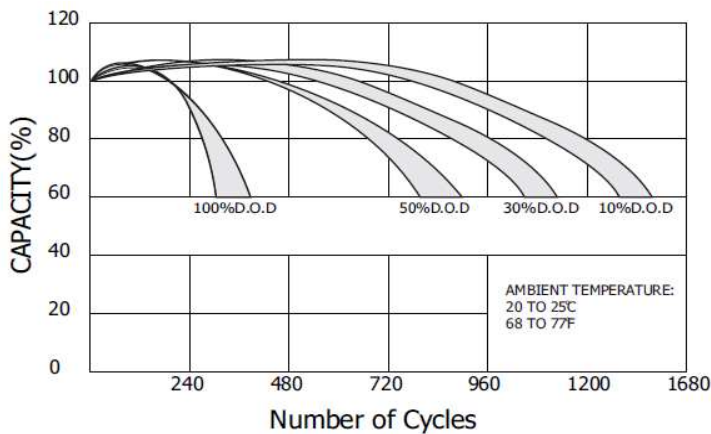
Discharge Characteristics (25°C)



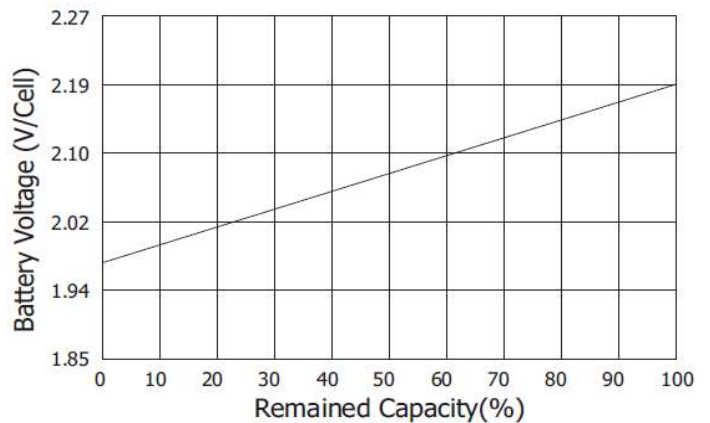
Charging Characteristics (25°C)



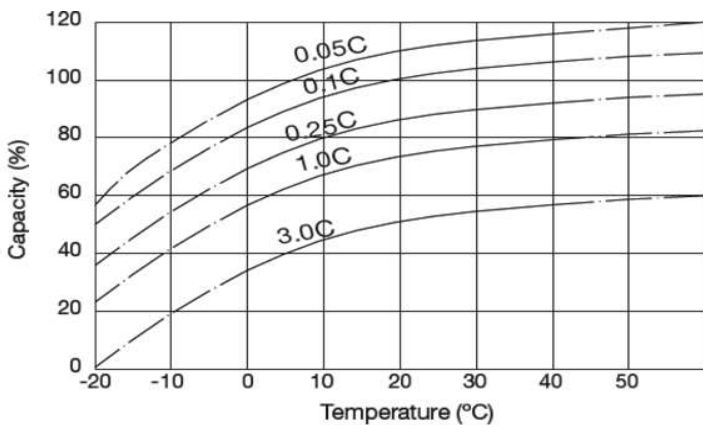
Cycle Service Life in Relation to Depth of Discharge



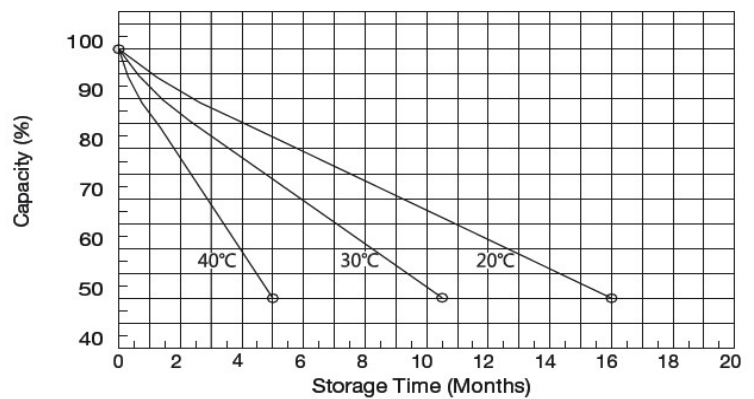
Relationship Between OCV and Residual Capacity (25°C)



Temperature Effects on Capacity



Self Discharge Characteristics



SYSTEMS SUNLIGHT S.A.

Headquarters 8, Thivaidos & Sfiggos Street | 145 64 Kifissia | Greece
 Manufacturing Plant Neo Olvio | 672 00 Xanthi | Greece
 Recycling Plant Industrial Area of Komotini | 691 00 Komotini | Greece
 Southeast Europe Industrial Sales 14B Menexedon Street | 145 64 Kato Kifissia | Greece

Sunlight Batteries USA Inc. 4755 McConnell Center Drive | Greensboro | NC 27405 | USA
 Sunlight European Battery Assembly 175, Via Stra | 37030 Colognola Ai Colli Verona | Italy
 Sunlight Industrial SRL 111-115, Timisoara Boulevard | 061327 Bucharest | Romania
www.systems-sunlight.com