

SUNLIGHT AccuForce 12V-80Ah S

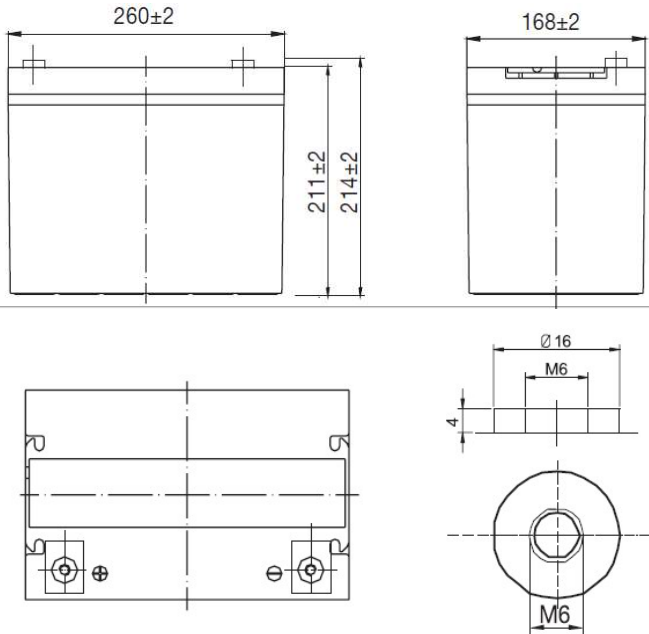
AGM VRLA Battery

Features & Benefits

- Solar / Wind power systems
- Residential installations
- Golf carts and electric powered vehicles
- Marine equipment
- Electric wheelchairs
- Traffic systems (signaling and lighting)
- Remote monitoring and controlling
- Power tools and cleaning machines
- Uninterruptible power supply (UPS)

Specifications

Nominal Voltage	12 V
Number of cells	6
Cycle Life	Approx. 800 cycles at 50% DOD
Dimensions	Length 260 mm
	Width 168 mm
	Height 211 mm
	Total Height 214 mm
Weight	22 kg
	120 hours rate (1.85Vpc) 82.80 Ah
Nominal Capacity (25°C)	100 hours rate (1.85Vpc) 82.00 Ah
	48 hours rate (1.80Vpc) 83.04 Ah
	10 hour rate (1.80Vpc) 75.80 Ah
	Internal Resistance (fully charged, 25°C) 5.7 mOhm
Self Discharge	less than 3% per month at 25°C
Nominal Operating Temperature	25°C
Operating Temperature range	Discharge -15°C to 45°C
	Charge 0°C to 40°C
	Storage -15°C to 40°C
Float Charging Voltage	2.27 to 2.30 V/cell at 25°C Temperature compensation -18mV/°C
Cyclic Charging Voltage	2.40 to 2.47 V/cell at 25°C Temperature compensation -30mV/°C
Maximum charging current	22.5 A
Maximum discharge current	780 A (5 sec.)
Short circuit current	1170 A



Performance Data

Discharge Constant Current at 25°C (Amperes)

End Voltage V/cell	15min	30min	1h	2h	3h	4h	5h	6h	8h	10h	20h	48h	72h	100h	120h
1.60 V	126	76.6	47.4	27.7	19.4	15.8	13.5	11.8	9.24	7.73	4.03	----	----	----	----
1.65 V	123	75.0	46.8	27.5	19.3	15.8	13.4	11.6	9.24	7.73	3.03	----	----	----	----
1.70 V	119	72.7	45.5	27.3	19.1	15.6	13.3	11.6	9.17	7.66	4.01	1.74	----	----	----
1.75 V	115	70.9	44.5	27.0	19.0	15.6	13.3	11.5	9.09	7.66	3.99	1.73	1.17	----	----
1.80 V	108	68.3	43.3	26.2	18.4	15.0	12.9	11.1	8.79	7.58	3.99	1.73	1.17	----	----
1.85 V	102	64.5	40.9	24.7	17.4	14.2	12.2	10.5	8.28	7.17	3.74	1.64	1.11	0.82	0.69

Discharge Constant Power at 25°C (Watts/cell)

End Voltage V/cell	15min	30min	1h	2h	3h	4h	5h	6h	8h	10h	20h	48h	72h	100h	120h
1.60 V	231	142	89.9	53.0	37.5	30.6	26.6	22.9	18.3	15.3	8.08	----	----	----	----
1.65 V	225	139	88.5	52.9	37.4	30.5	26.3	22.7	18.3	15.3	8.06	----	----	----	----
1.70 V	217	135	86.5	52.5	37.2	30.3	26.1	22.7	18.2	15.2	8.06	3.50	----	----	----
1.75 V	210	132	84.8	51.8	36.9	30.1	25.9	22.6	18.0	15.2	8.03	3.48	2.37	----	----
1.80 V	199	128	82.3	50.5	35.9	29.6	25.4	22.0	17.5	15.0	7.96	3.45	2.34	----	----
1.85 V	189	121	78.1	47.8	34.0	28.1	24.1	20.9	16.6	14.3	7.54	3.27	2.22	1.61	1.37

SYSTEMS SUNLIGHT S.A.

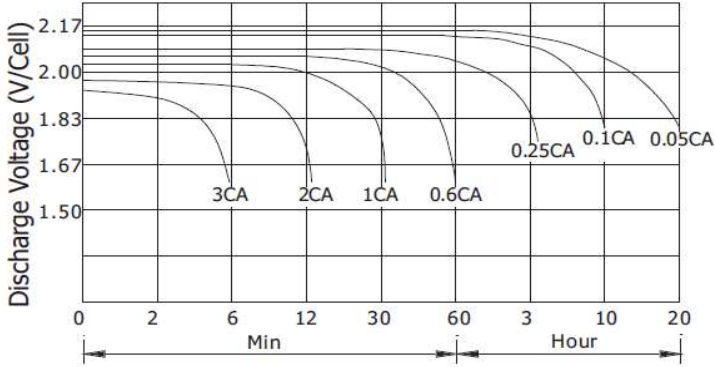
Headquarters 8, Thivaidos & Sfiggos Street | 145 64 Kifissia | Greece
 Manufacturing Plant Neo Olvio | 672 00 Xanthi | Greece
 Recycling Plant Industrial Area of Komotini | 691 00 Komotini | Greece
 Southeast Europe Industrial Sales 14B Menexedon Street | 145 64 Kato Kifissia | Greece

Sunlight Batteries USA Inc. 4755 McConnell Center Drive | Greensboro | NC 27405 | USA
 Sunlight European Battery Assembly 175, Via Stra | 37030 Colognola Ai Colli Verona | Italy
 Sunlight Industrial SRL 111-115, Timisoara Boulevard | 061327 Bucharest | Romania
www.systems-sunlight.com

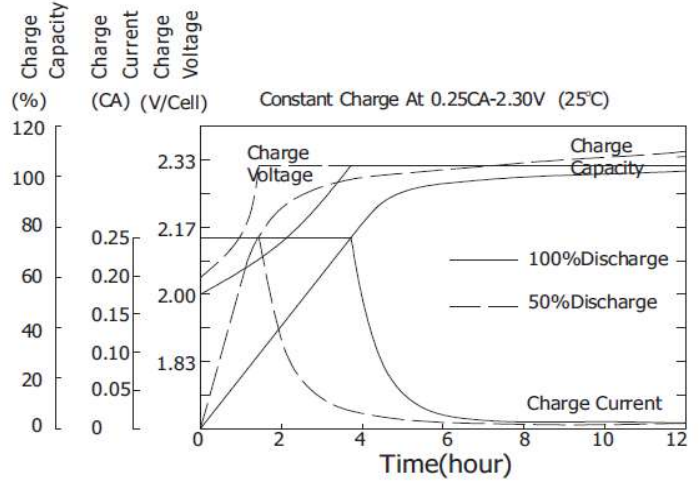
SUNLIGHT AccuForce 12V-80Ah S

AGM VRLA Battery

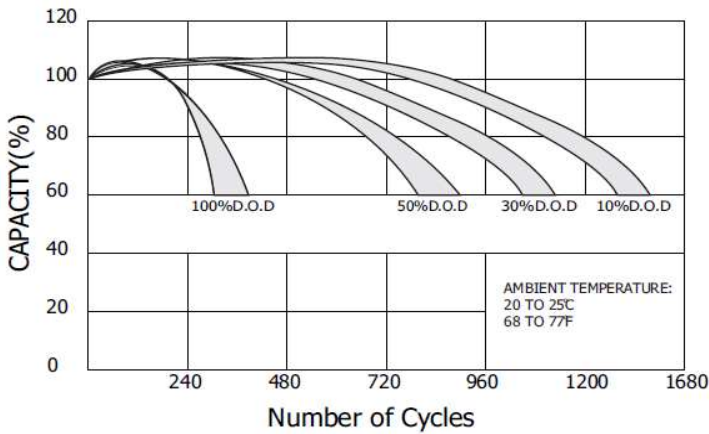
Discharge Characteristics (25°C)



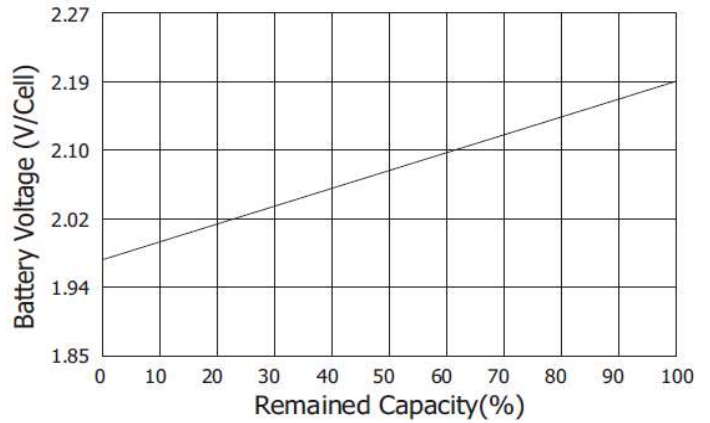
Charging Characteristics (25°C)



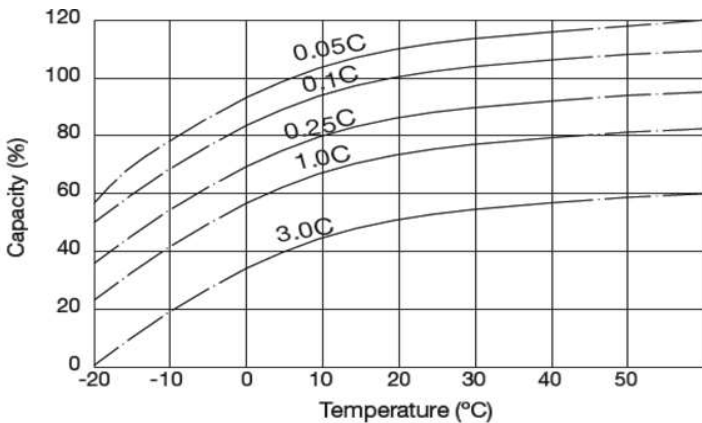
Cycle Service Life in Relation to Depth of Discharge



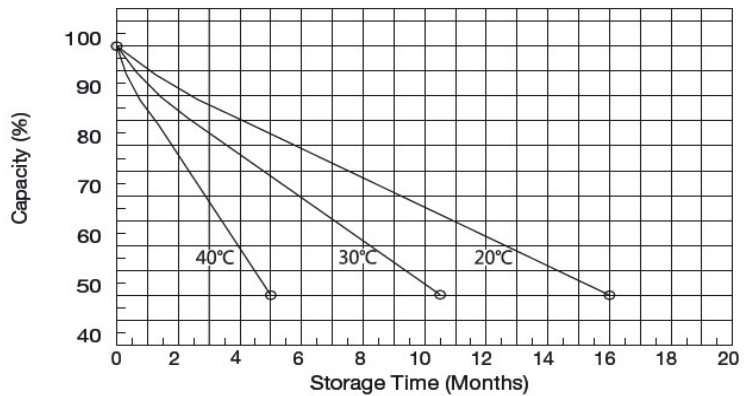
Relationship Between OCV and Residual Capacity (25°C)



Temperature Effects on Capacity



Self Discharge Characteristics



SYSTEMS SUNLIGHT S.A.

Headquarters 8, Thivaidos & Sfiggos Street | 145 64 Kifissia | Greece
 Manufacturing Plant Neo Olvio | 672 00 Xanthi | Greece
 Recycling Plant Industrial Area of Komotini | 691 00 Komotini | Greece
 Southeast Europe Industrial Sales 14B Menexedon Street | 145 64 Kato Kifissia | Greece

Sunlight Batteries USA Inc. 4755 McConnell Center Drive | Greensboro | NC 27405 | USA
 Sunlight European Battery Assembly 175, Via Stra | 37030 Colognola Ai Colli Verona | Italy
 Sunlight Industrial SRL 111-115, Timisoara Boulevard | 061327 Bucharest | Romania
www.systems-sunlight.com