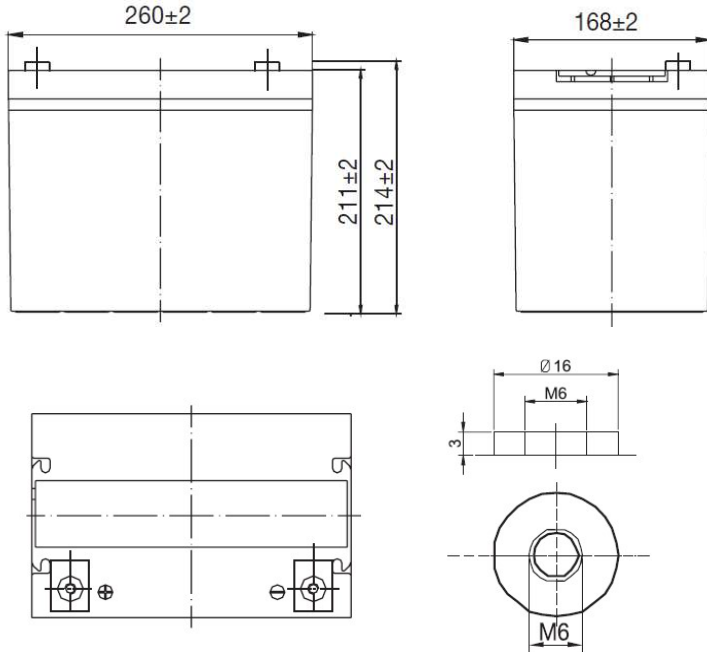


# SUNLIGHT AccuForce 12V-75Ah

AGM VRLA Battery

## Applications

- Uninterruptible Power Supplies (UPS)
- Electric Power Systems (EPS)
- Emergency backup power supplies
- Electronic apparatus and equipment
- Communication power supplies
- DC power supplies
- Auto control system



## Specifications

|   |  |               |
|---|--|---------------|
| Nominal Voltage                           | 12 V   |               |
| Number of cells                           | 6  |               |
| Design Floating Life (20°C)               | 10 years   |               |
| Dimensions                                | Length   | 260 mm        |
|   | Width  | 168 mm        |
|   | Height   | 211 mm        |
|   | Total Height   | 214 mm        |
| Weight                                    |  | 22.1 kg       |
|   |  |               |
| Nominal Capacity (25°C)                   | 20 hours rate (1.80)   | 80.0 Ah       |
|   | 10 hours rate (1.80)   | 75.0 Ah       |
|   | 5 hours rate (1.75)  | 66.0 Ah       |
|   | 1 hour rate (1.65)   | 47.0 Ah       |
| Internal Resistance (fully charged, 25°C) | 8.2 mOhms  |               |
| Self Discharge                            | approx. 3% per month at 25°C                                     |               |
| Nominal Operating Temperature             | 25°C   |               |
| Operating Temperature range               | Discharge  | -15°C to 45°C |
|   | Charge   | 0°C to 40°C   |
|   | Storage  | -15°C to 40°C |
| Float Charging Voltage                    | 2.27 to 2.30 V/cell at 25°C<br>Temperature compensation -18mV/°C |               |
| Maximum charging current                  | 18.75 A  |               |
| Maximum discharge current (25°C)          | 700 A (5 sec.)   |               |
| Short Circuit Current                     | 1000 A   |               |

## Performance Data

### Discharge Constant Current at 25°C (Amperes)

| End Voltage (V/cell) | 5min | 10min | 15min | 20min | 30min | 45min | 1h   | 2h   | 3h   | 4h   | 5h   | 6h   | 8h   | 10h  | 20h  |
|----------------------|------|-------|-------|-------|-------|-------|------|------|------|------|------|------|------|------|------|
| 1.60 V               | 276  | 163   | 128   | 108.8 | 78.5  | 57.7  | 47.5 | 28.3 | 19.7 | 16.5 | 13.5 | 10.9 | 9.28 | 7.95 | 4.15 |
| 1.65 V               | 267  | 158   | 125   | 103.0 | 76.5  | 55.7  | 47.0 | 27.5 | 19.6 | 16.4 | 13.4 | 10.8 | 9.22 | 7.83 | 4.13 |
| 1.70 V               | 255  | 150   | 119   | 99.2  | 74.0  | 54.6  | 46.8 | 27.3 | 19.5 | 16.2 | 13.3 | 10.8 | 9.15 | 7.77 | 4.10 |
| 1.75 V               | 244  | 146   | 116   | 95.8  | 72.4  | 52.3  | 45.2 | 26.9 | 19.4 | 15.9 | 13.2 | 10.7 | 9.09 | 7.64 | 4.05 |
| 1.80 V               | 230  | 136   | 111   | 90.7  | 69.8  | 50.7  | 44.1 | 26.2 | 18.7 | 15.5 | 12.8 | 10.4 | 8.82 | 7.50 | 4.00 |

### Discharge Constant Power at 25°C (Watts/Cell)

| End Voltage (V/cell) | 5min | 10min | 15min | 20min | 30min | 45min | 1h   | 2h   | 3h   | 4h   | 5h   | 6h   | 8h   | 10h  | 20h  |
|----------------------|------|-------|-------|-------|-------|-------|------|------|------|------|------|------|------|------|------|
| 1.60 V               | 503  | 292   | 234   | 201   | 145   | 108.8 | 91.9 | 54.4 | 38.6 | 31.6 | 27.1 | 23.6 | 18.5 | 15.9 | 8.30 |
| 1.65 V               | 486  | 283   | 229   | 196   | 142   | 106.0 | 90.5 | 53.0 | 38.5 | 31.4 | 27.0 | 23.4 | 18.4 | 15.9 | 8.28 |
| 1.70 V               | 464  | 272   | 220   | 188   | 137   | 104.0 | 88.2 | 52.6 | 38.1 | 31.2 | 26.8 | 23.3 | 18.2 | 15.8 | 8.26 |
| 1.75 V               | 445  | 260   | 213   | 181   | 134   | 99.9  | 86.5 | 51.9 | 37.9 | 31.1 | 26.6 | 23.1 | 18.1 | 15.5 | 8.24 |
| 1.80 V               | 419  | 250   | 202   | 171   | 129   | 96.8  | 83.7 | 50.5 | 36.7 | 30.5 | 25.8 | 22.4 | 17.5 | 15.2 | 8.16 |

Note: The above characteristics data can be obtained within three charge/discharge cycles.

## SYSTEMS SUNLIGHT S.A.

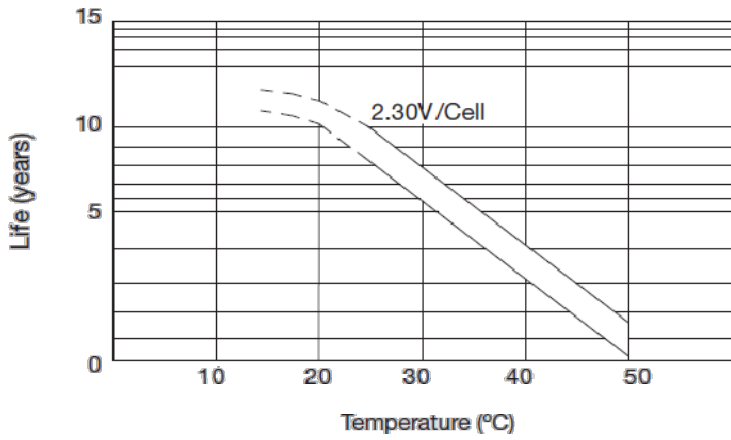
Headquarters 8, Thivaídos & Sfiggós Street | 145 64 Kifissia | Greece  
 Manufacturing Plant Neo Olvio | 672 00 Xanthi | Greece  
 Recycling Plant Industrial Area of Komotini | 691 00 Komotini | Greece  
 Southeast Europe Industrial Sales 14B Menexedon Street | 145 64 Kato Kifissia | Greece

Sunlight Batteries USA Inc. 4755 McConnell Center Drive | Greensboro | NC 27405 | USA  
 Sunlight European Battery Assembly 175, Via Stra | 37030 Colognola Ai Colli Verona | Italy  
 Sunlight Industrial SRL 111-115, Timisoara Boulevard | 061327 Bucharest | Romania  
[www.systems-sunlight.com](http://www.systems-sunlight.com)

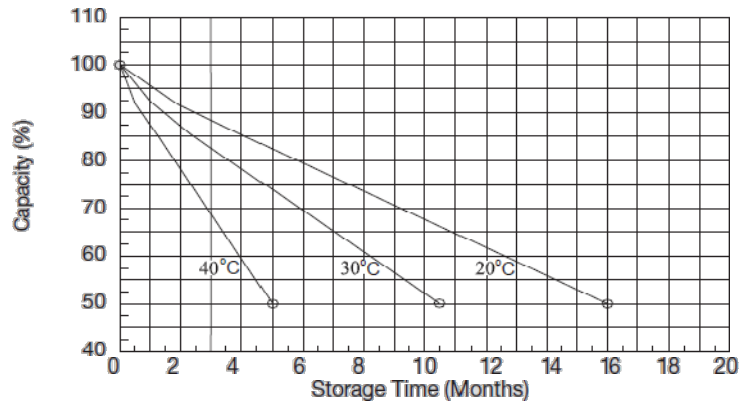
# SUNLIGHT AccuForce 12V-75Ah

AGM VRLA Battery

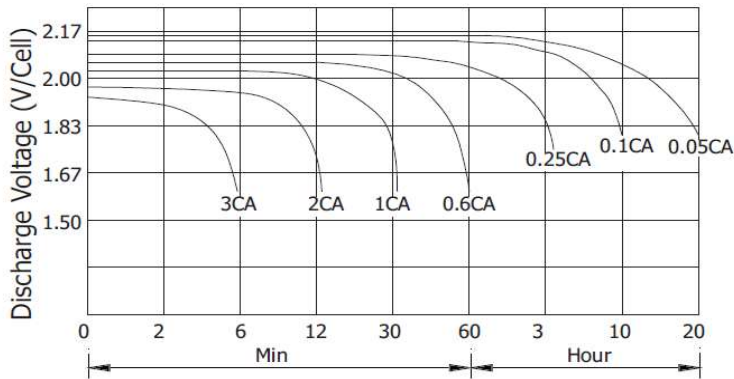
## Temperature Effects on Float Life



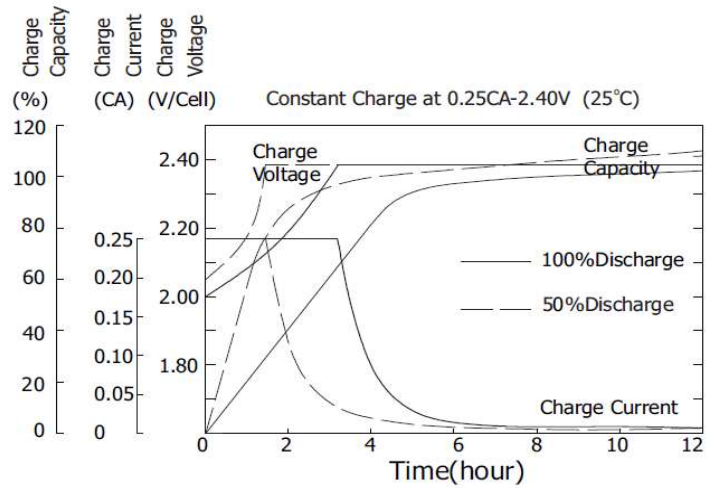
## Self Discharge Characteristics



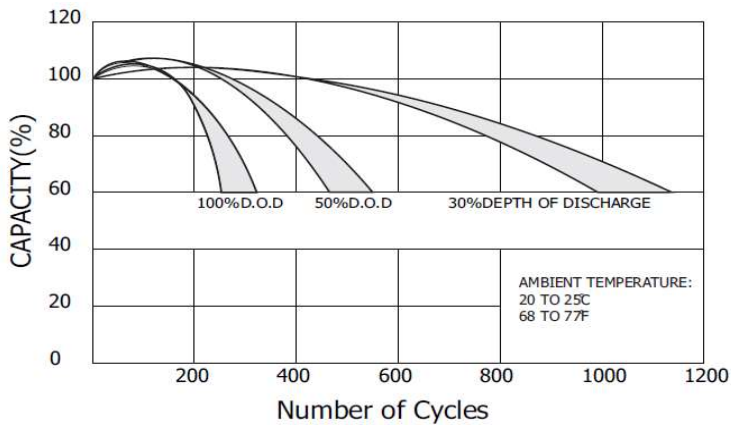
## Discharge Characteristics (25°C)



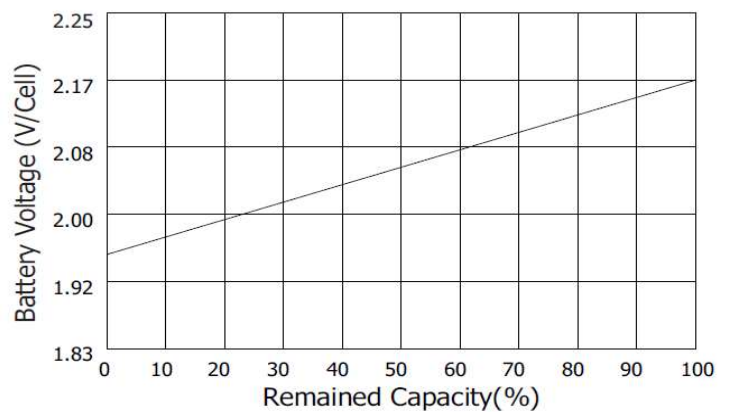
## Charging Characteristics (25°C)



## Cycle Service Life in Relation to Depth of Discharge



## Relationship Between OCV and Residual Capacity (25°C)



## SYSTEMS SUNLIGHT S.A.

Headquarters 8, Thivaídos & Sfiggós Street | 145 64 Kífissia | Greece  
 Manufacturing Plant Neo Olvío | 672 00 Xanthi | Greece  
 Recycling Plant Industrial Area of Komotini | 691 00 Komotini | Greece  
 Southeast Europe Industrial Sales 14B Menexedon Street | 145 64 Kato Kífissia | Greece

Sunlight Batteries USA Inc. 4755 McConnell Center Drive | Greensboro | NC 27405 | USA  
 Sunlight European Battery Assembly 175, Via Stra | 37030 Colognola Ai Colli Verona | Italy  
 Sunlight Industrial SRL 111-115, Timisoara Boulevard | 061327 Bucharest | Romania  
[www.systems-sunlight.com](http://www.systems-sunlight.com)