

SUNLIGHT AccuForce 12V-230Ah S

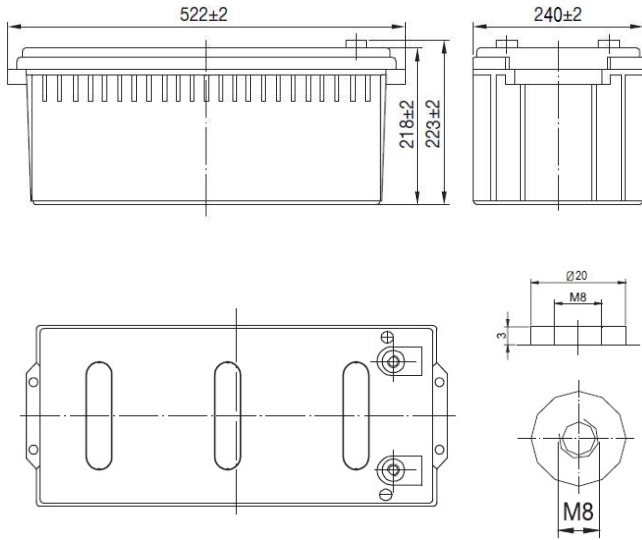
AGM VRLA Battery

Features & Benefits

- Solar / Wind power systems
- Residential installations
- Golf carts and electric powered vehicles
- Marine equipment
- Electric wheelchairs
- Traffic systems (signaling and lighting)
- Remote monitoring and controlling
- Power tools and cleaning machines
- Uninterruptible power supply (UPS)

Specifications

Nominal Voltage	12 V
Number of cells	6
Cycle Life	Approx. 800 cycles at 50% DOD
Dimensions	Length 522 mm
	Width 240 mm
	Height 218 mm
	Total Height 223 mm
Weight	57.5 kg
	Nominal Capacity (25°C)
	100 hours rate (1.85Vpc) 232.00 Ah
	48 hours rate (1.80Vpc) 218.88 Ah
	10 hour rate (1.80Vpc) 202.00 Ah
Internal Resistance (fully charged, 25°C)	3.0 mOhm
Self Discharge	less than 3% per month at 25°C
Nominal Operating Temperature	25°C
Operating Temperature range	Discharge -15°C to 45°C
	Charge 0°C to 40°C
	Storage -15°C to 40°C
Float Charging Voltage	2.27 to 2.30 V/cell at 25°C
	Temperature compensation -18mV/°C
Cyclic Charging Voltage	2.40 to 2.47 V/cell at 25°C
	Temperature compensation -30mV/°C
Maximum charging current	60 A
Maximum discharge current	1900 A (5 sec.)
Short circuit current	2850 A



Performance Data

Discharge Constant Current at 25°C (Amperes)

End Voltage V/cell	15min	30min	1h	2h	3h	4h	5h	6h	8h	10h	20h	48h	72h	100h	120h
1.60 V	337	204	126	73.7	51.5	42.2	36.1	31.4	24.7	20.6	11.0	----	----	----	----
1.65 V	329	200	124	73.3	51.3	42.0	35.8	30.9	24.6	20.5	10.9	----	----	----	----
1.70 V	317	194	121	72.7	50.9	41.6	35.6	30.9	24.4	20.4	10.8	4.71	----	----	----
1.75 V	305	189	119	71.7	50.5	41.4	35.4	30.7	24.2	20.3	10.7	4.67	3.33	----	----
1.80 V	289	182	115	69.9	49.1	40.2	34.3	29.7	23.4	20.2	10.6	4.56	3.08	----	----
1.85 V	275	173	109	66.4	46.7	38.2	32.6	28.2	22.2	19.2	10.1	4.42	2.99	2.32	1.97

Discharge Constant Power at 25°C (Watts/cell)

End Voltage V/cell	15min	30min	1h	2h	3h	4h	5h	6h	8h	10h	20h	48h	72h	100h	120h
1.60 V	616	378	239	141	100.0	81.8	70.7	61.3	48.8	41.0	21.8	----	----	----	----
1.65 V	601	372	236	141	99.7	81.5	70.0	60.9	48.8	40.8	21.7	----	----	----	----
1.70 V	579	361	231	140	99.0	80.8	69.7	60.6	48.5	40.3	21.5	9.38	----	----	----
1.75 V	559	353	226	138	98.3	80.5	69.0	60.0	48.2	40.3	21.3	9.30	6.25	----	----
1.80 V	530	341	220	135	95.7	78.8	67.7	58.6	46.5	40.0	21.2	9.12	6.15	----	----
1.85 V	504	324	209	128	90.8	74.8	64.3	55.8	44.2	38.0	20.2	8.78	5.92	4.62	3.92

SYSTEMS SUNLIGHT S.A.

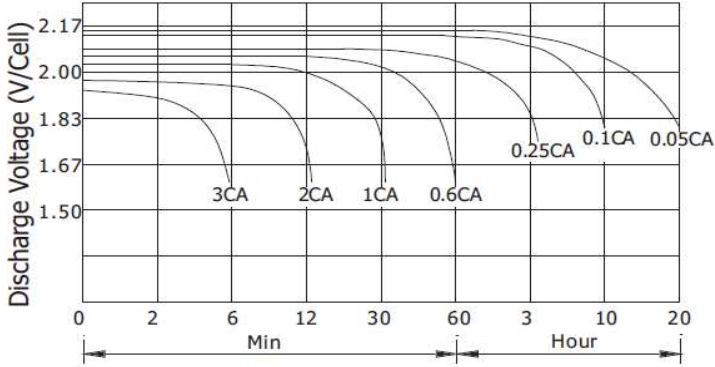
Headquarters 8, Thivaidos & Sfiggos Street | 145 64 Kifissia | Greece
 Manufacturing Plant Neo Olvio | 672 00 Xanthi | Greece
 Recycling Plant Industrial Area of Komotini | 691 00 Komotini | Greece
 Southeast Europe Industrial Sales 14B Menexedon Street | 145 64 Kato Kifissia | Greece

Sunlight Batteries USA Inc. 4755 McConnell Center Drive | Greensboro | NC 27405 | USA
 Sunlight European Battery Assembly 175, Via Stra | 37030 Colognola Ai Colli Verona | Italy
 Sunlight Industrial SRL 111-115, Timisoara Boulevard | 061327 Bucharest | Romania
www.systems-sunlight.com

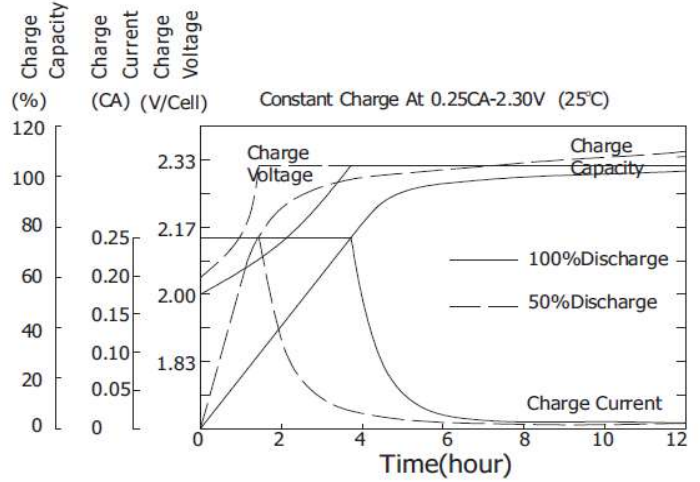
SUNLIGHT AccuForce 12V-230Ah S

AGM VRLA Battery

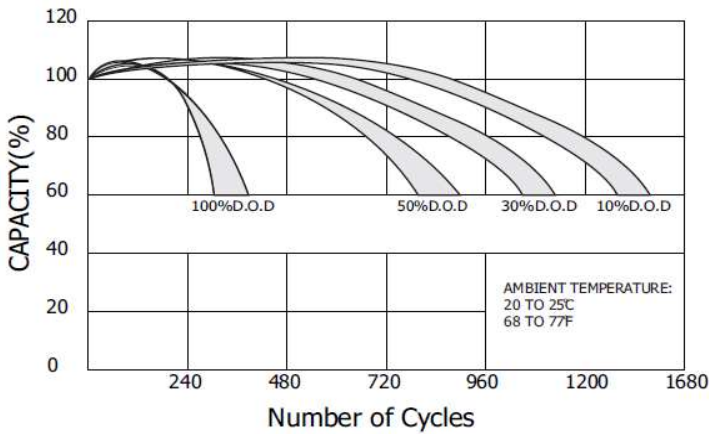
Discharge Characteristics (25°C)



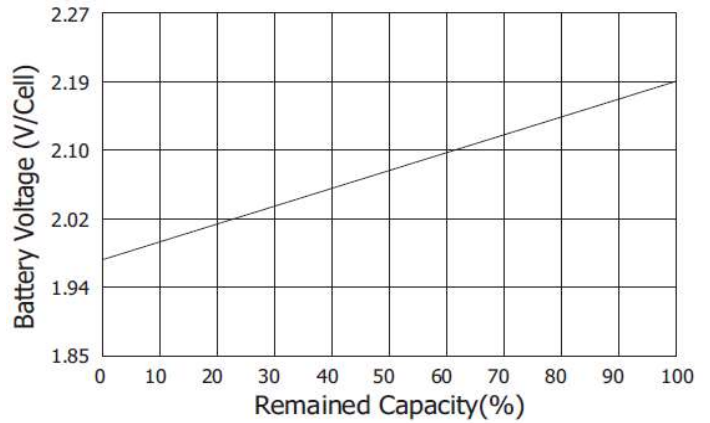
Charging Characteristics (25°C)



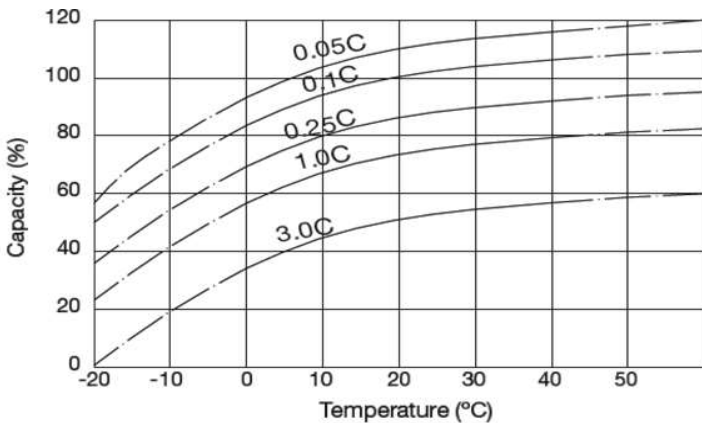
Cycle Service Life in Relation to Depth of Discharge



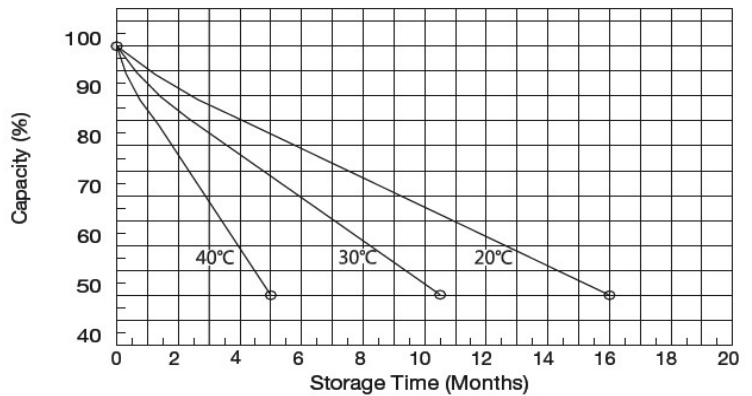
Relationship Between OCV and Residual Capacity (25°C)



Temperature Effects on Capacity



Self Discharge Characteristics



SYSTEMS SUNLIGHT S.A.

Headquarters 8, Thivaidos & Sfiggos Street | 145 64 Kifissia | Greece
 Manufacturing Plant Neo Olvio | 672 00 Xanthi | Greece
 Recycling Plant Industrial Area of Komotini | 691 00 Komotini | Greece
 Southeast Europe Industrial Sales 14B Menexedon Street | 145 64 Kato Kifissia | Greece

Sunlight Batteries USA Inc. 4755 McConnell Center Drive | Greensboro | NC 27405 | USA
 Sunlight European Battery Assembly 175, Via Stra | 37030 Colognola Ai Colli Verona | Italy
 Sunlight Industrial SRL 111-115, Timisoara Boulevard | 061327 Bucharest | Romania
www.systems-sunlight.com