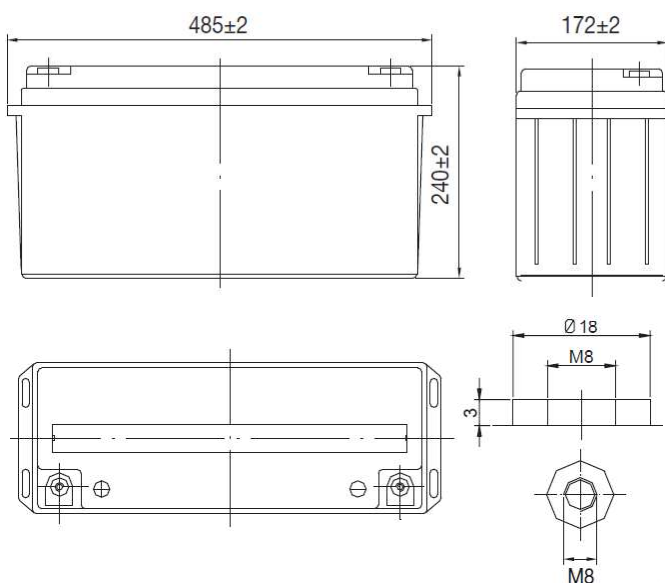


SUNLIGHT AccuForce 12V-175Ah S

AGM VRLA Battery

Features & Benefits

- Solar / Wind power systems
- Residential installations
- Golf carts and electric powered vehicles
- Marine equipment
- Electric wheelchairs
- Traffic systems (signaling and lighting)
- Remote monitoring and controlling
- Power tools and cleaning machines
- Uninterruptible power supply (UPS)



Specifications

Nominal Voltage	12 V	
Number of cells	6	
Cycle Life	Approx. 800 cycles at 50% DOD	
Dimensions	Length	485 mm
	Width	172 mm
	Height	240 mm
	Total Height	240 mm
Weight		42.8 kg
	120 hours rate (1.85Vpc)	177.60 Ah
Nominal Capacity (25°C)	100 hours rate (1.85Vpc)	175.00 Ah
	48 hours rate (1.80Vpc)	167.04 Ah
	10 hour rate (1.80Vpc)	151.00 Ah
	Internal Resistance (fully charged, 25°C)	3.5 mOhm
Self Discharge	less than 3% per month at 25°C	
Nominal Operating Temperature	25°C	
Operating Temperature range	Discharge	-15°C to 45°C
	Charge	0°C to 40°C
	Storage	-15°C to 40°C
Float Charging Voltage		2.27 to 2.30 V/cell at 25°C
	Temperature compensation	-18mV/°C
Cyclic Charging Voltage		2.40 to 2.47 V/cell at 25°C
	Temperature compensation	-30mV/°C
Maximum charging current	45 A	
Maximum discharge current	1600 A (5 sec.)	
Short circuit current	2400 A	

Performance Data

Discharge Constant Current at 25°C (Amperes)

End Voltage V/cell	15min	30min	1h	2h	3h	4h	5h	6h	8h	10h	20h	48h	72h	100h	120h
1.60 V	253	153	94.6	55.3	38.6	31.6	27.0	23.5	18.4	15.4	8.07	---	---	---	---
1.65 V	246	150	93.4	54.9	38.4	31.4	26.8	23.0	18.4	15.4	8.05	---	---	---	---
1.70 V	238	145	91.0	54.5	38.2	31.2	26.6	23.0	18.3	15.3	8.05	3.54	---	---	---
1.75 V	229	141	89.1	53.8	37.8	31.1	26.5	23.1	18.1	15.3	7.99	3.31	2.36	---	---
1.80 V	216	136	86.5	52.4	36.7	30.1	25.7	22.3	17.5	15.1	7.94	3.48	2.35	---	---
1.85 V	203	129	81.1	49.2	34.4	28.2	24.2	21.0	16.5	14.5	7.47	3.27	2.21	1.75	1.48

Discharge Constant Power at 25°C (Watts/cell)

End Voltage V/cell	15min	30min	1h	2h	3h	4h	5h	6h	8h	10h	20h	48h	72h	100h	120h
1.60 V	462	283	179	106.0	75.0	61.2	53.0	46.1	36.6	30.6	16.1	---	---	---	---
1.65 V	451	278	177	105.0	74.7	61.2	52.3	45.7	36.6	30.6	16.1	---	---	---	---
1.70 V	434	271	173	105.0	74.2	60.5	52.3	45.4	36.3	30.2	16.1	7.06	---	---	---
1.75 V	419	264	170	103.0	73.8	60.2	51.8	44.7	36.0	30.2	16.0	7.02	4.72	---	---
1.80 V	397	255	165	101.0	71.6	59.0	50.8	43.9	34.6	30.1	15.9	6.96	4.69	---	---
1.85 V	373	240	155	94.7	67.1	55.2	47.6	41.0	32.4	28.2	14.9	6.55	4.42	3.53	2.96

SYSTEMS SUNLIGHT S.A.

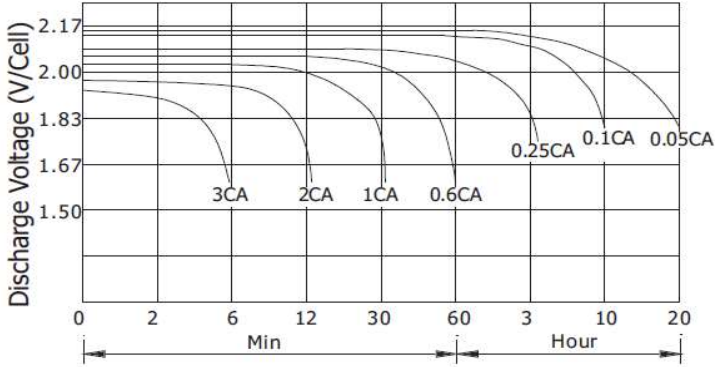
Headquarters 8, Thivaidos & Sfiggos Street | 145 64 Kifissia | Greece
 Manufacturing Plant Neo Olvio | 672 00 Xanthi | Greece
 Recycling Plant Industrial Area of Komotini | 691 00 Komotini | Greece
 Southeast Europe Industrial Sales 14B Menexedon Street | 145 64 Kato Kifissia | Greece

Sunlight Batteries USA Inc. 4755 McConnell Center Drive | Greensboro | NC 27405 | USA
 Sunlight European Battery Assembly 175, Via Stra | 37030 Colognola Ai Colli Verona | Italy
 Sunlight Industrial SRL 111-115, Timisoara Boulevard | 061327 Bucharest | Romania
www.systems-sunlight.com

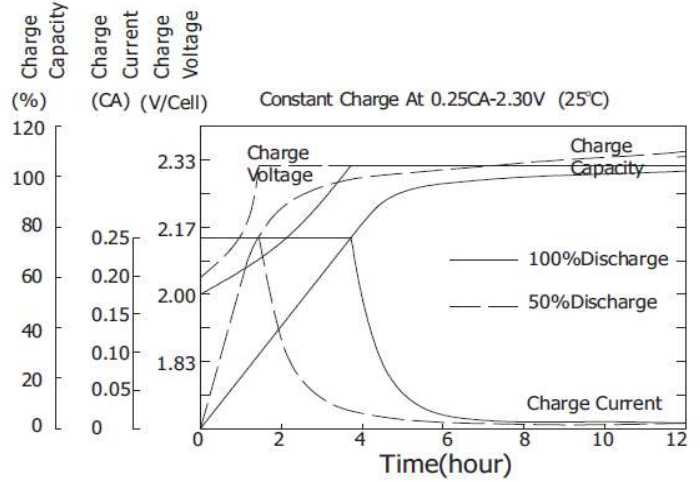
SUNLIGHT AccuForce 12V-175Ah S

AGM VRLA Battery

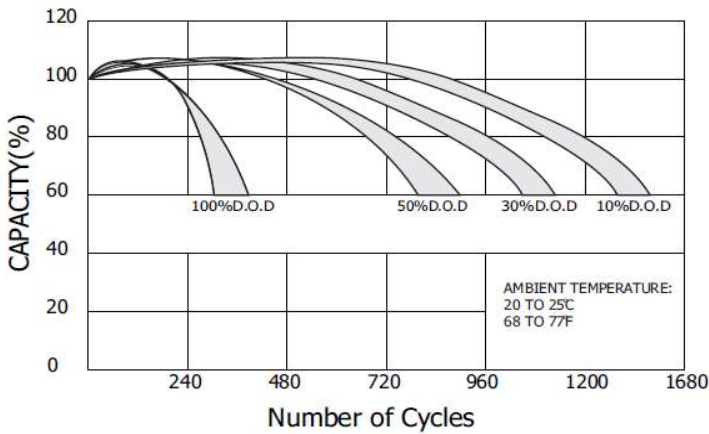
Discharge Characteristics (25°C)



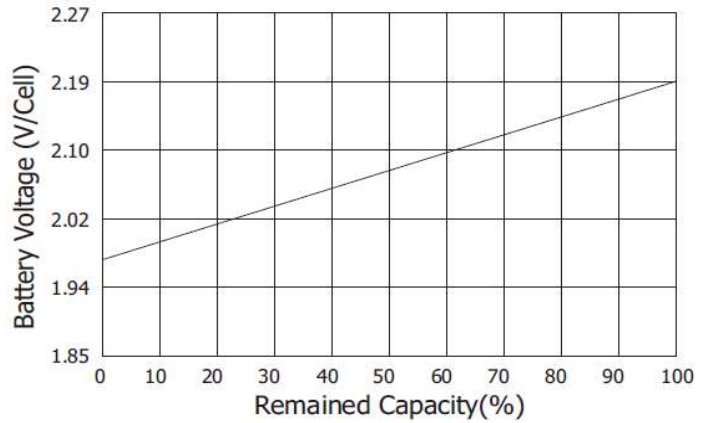
Charging Characteristics (25°C)



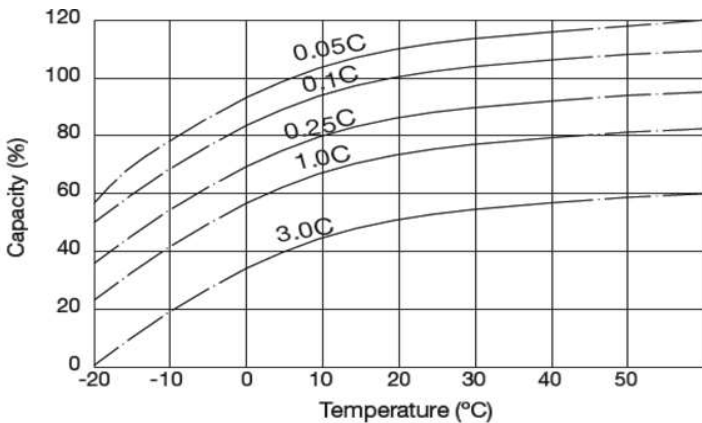
Cycle Service Life in Relation to Depth of Discharge



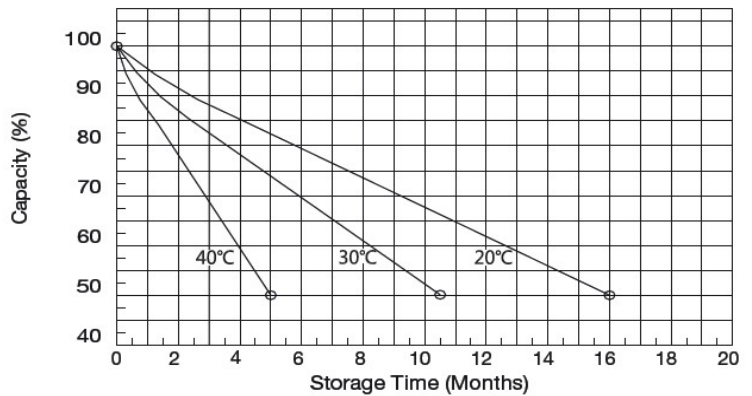
Relationship Between OCV and Residual Capacity (25°C)



Temperature Effects on Capacity



Self Discharge Characteristics



SYSTEMS SUNLIGHT S.A.

Headquarters 8, Thivaidos & Sfiggos Street | 145 64 Kifissia | Greece
 Manufacturing Plant Neo Olvio | 672 00 Xanthi | Greece
 Recycling Plant Industrial Area of Komotini | 691 00 Komotini | Greece
 Southeast Europe Industrial Sales 14B Menexedon Street | 145 64 Kato Kifissia | Greece

Sunlight Batteries USA Inc. 4755 McConnell Center Drive | Greensboro | NC 27405 | USA
 Sunlight European Battery Assembly 175, Via Stra | 37030 Colognola Ai Colli Verona | Italy
 Sunlight Industrial SRL 111-115, Timisoara Boulevard | 061327 Bucharest | Romania
www.systems-sunlight.com