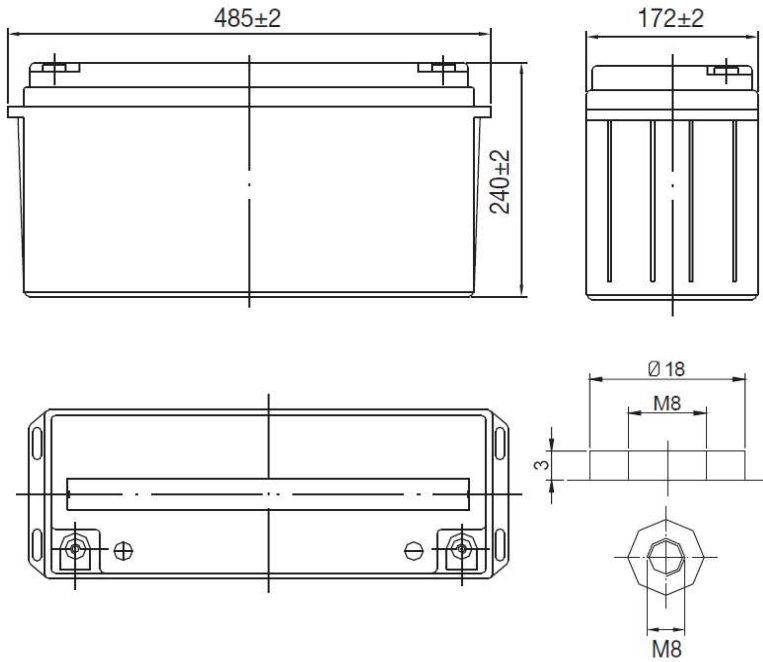


SUNLIGHT AccuForce 12V-150Ah

AGM VRLA Battery

Applications

- Uninterruptible Power Supplies (UPS)
- Electric Power Systems (EPS)
- Emergency backup power supplies
- Electronic apparatus and equipment
- Communication power supplies
- DC power supplies
- Auto control system



Specifications

Nominal Voltage	12 V	
Number of cells	6	
Design Floating Life (20°C)	10 years	
Dimensions	Length	485 mm
	Width	172 mm
	Height	240 mm
	Total Height	240 mm
Weight		43.0 kg
Nominal Capacity (25°C)	20 hours rate (1.80)	159.0 Ah
	10 hours rate (1.80)	150.0 Ah
	5 hours rate (1.75)	133.0 Ah
	1 hour rate (1.65)	93.9 Ah
Internal Resistance (fully charged, 25°C)	4.8 mOhms	
Self Discharge	approx. 3% per month at 25°C	
Nominal Operating Temperature	25°C	
Operating Temperature range	Discharge	-15°C to 45°C
	Charge	0°C to 40°C
	Storage	-15°C to 40°C
Float Charging Voltage	2.27 to 2.30 V/cell at 25°C Temperature compensation -18mV/°C	
Maximum charging current	37.5 A	
Maximum discharge current (25°C)	1500 A (5 sec.)	
Short Circuit Current	2300 A	

Performance Data

Discharge Constant Current at 25°C (Amperes)

End Voltage (V/cell)	5min	10min	15min	20min	30min	45min	1h	2h	3h	4h	5h	6h	8h	10h	20h
1.60 V	525	305	257	217	155	116	94.1	56.0	39.4	32.8	27.1	24.0	18.6	15.9	8.30
1.65 V	504	298	250	208	152	111	93.9	55.2	39.1	32.6	26.9	23.6	18.5	15.7	8.27
1.70 V	485	287	241	200	150	108	93.6	54.7	38.9	32.5	26.7	23.4	18.3	15.5	8.25
1.75 V	468	277	233	193	144	106	90.6	53.9	38.6	31.7	26.6	23.3	18.2	15.3	8.23
1.80 V	444	262	222	183	139	100	87.8	52.5	37.5	30.9	25.8	22.6	17.7	15.0	7.95

Discharge Constant Power at 25°C (Watts/Cell)

End Voltage (V/cell)	5min	10min	15min	20min	30min	45min	1h	2h	3h	4h	5h	6h	8h	10h	20h
1.60 V	942	546	470	402	289	219	184	107	76.1	63.0	52.9	47.1	37.1	31.8	16.8
1.65 V	917	533	459	392	283	212	181	107	75.6	62.7	52.6	46.0	36.9	31.8	16.8
1.70 V	883	513	442	378	274	207	176	106	75.1	62.4	52.1	45.6	36.5	31.5	16.7
1.75 V	853	496	427	365	268	202	173	104	74.6	62.3	52.0	45.4	36.3	31.1	16.5
1.80 V	807	469	404	345	258	191	168	101	72.4	60.9	50.4	44.1	35.3	30.4	16.1

Note: The above characteristics data can be obtained within three charge/discharge cycles.

SYSTEMS SUNLIGHT S.A.

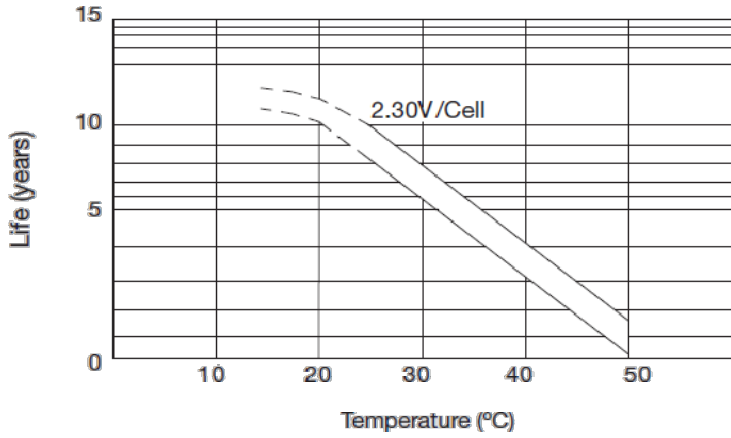
Headquarters 8, Thivaidos & Sfiggos Street | 145 64 Kifissia | Greece
 Manufacturing Plant Neo Olvio | 672 00 Xanthi | Greece
 Recycling Plant Industrial Area of Komotini | 691 00 Komotini | Greece
 Southeast Europe Industrial Sales 14B Menexedon Street | 145 64 Kato Kifissia | Greece

Sunlight Batteries USA Inc. 4755 McConnell Center Drive | Greensboro | NC 27405 | USA
 Sunlight European Battery Assembly 175, Via Stra | 37030 Colognola Ai Colli Verona | Italy
 Sunlight Industrial SRL 111-115, Timisoara Boulevard | 061327 Bucharest | Romania
www.systems-sunlight.com

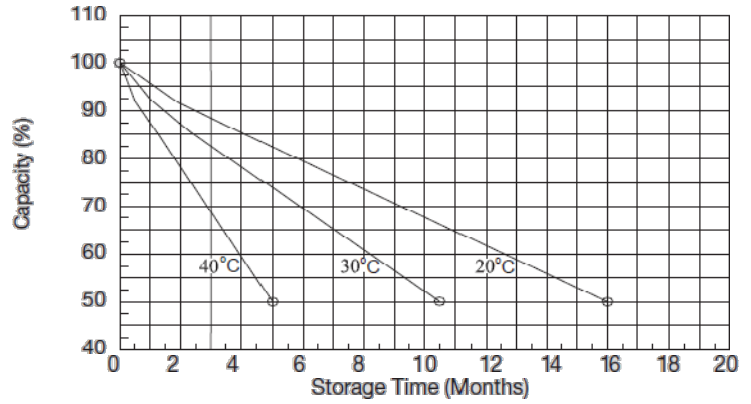
SUNLIGHT AccuForce 12V-150Ah

AGM VRLA Battery

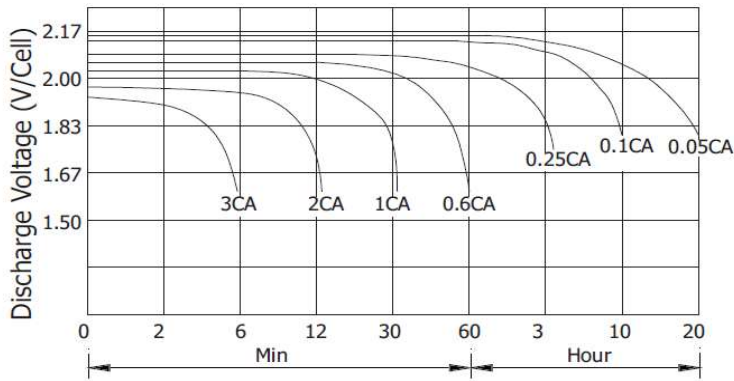
Temperature Effects on Float Life



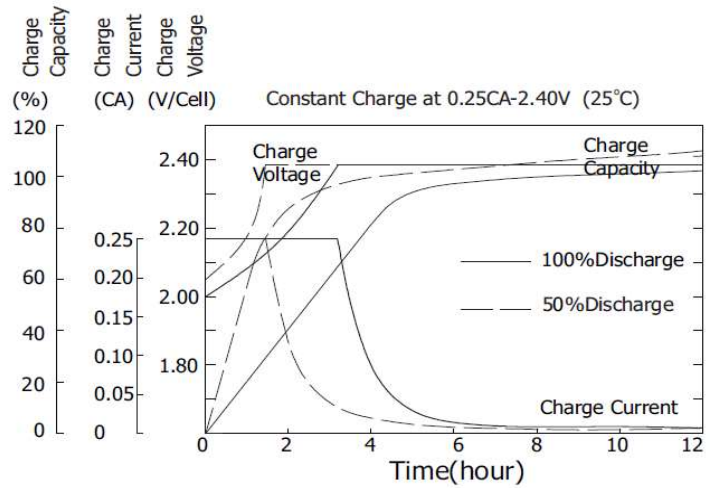
Self Discharge Characteristics



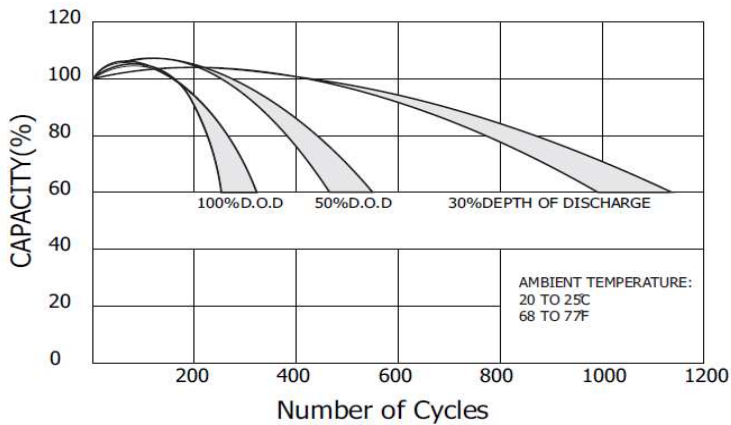
Discharge Characteristics (25°C)



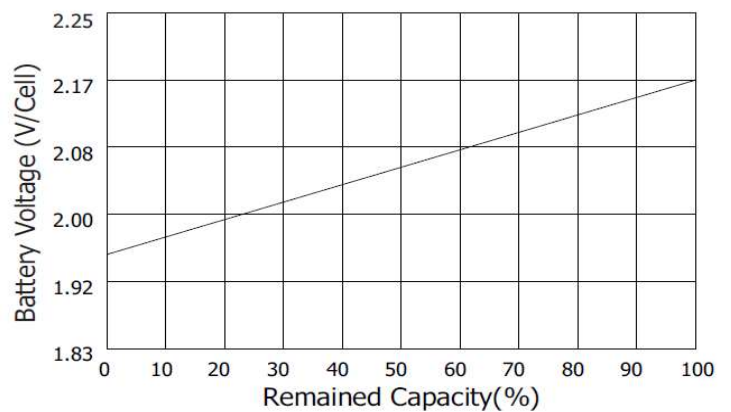
Charging Characteristics (25°C)



Cycle Service Life in Relation to Depth of Discharge



Relationship Between OCV and Residual Capacity (25°C)



SYSTEMS SUNLIGHT S.A.

Headquarters 8, Thivaidos & Sfiggos Street | 145 64 Kifissia | Greece
 Manufacturing Plant Neo Olvio | 672 00 Xanthi | Greece
 Recycling Plant Industrial Area of Komotini | 691 00 Komotini | Greece
 Southeast Europe Industrial Sales 14B Menexedon Street | 145 64 Kato Kifissia | Greece

Sunlight Batteries USA Inc. 4755 McConnell Center Drive | Greensboro | NC 27405 | USA
 Sunlight European Battery Assembly 175, Via Stra | 37030 Colognola Ai Colli Verona | Italy
 Sunlight Industrial SRL 111-115, Timisoara Boulevard | 061327 Bucharest | Romania
www.systems-sunlight.com