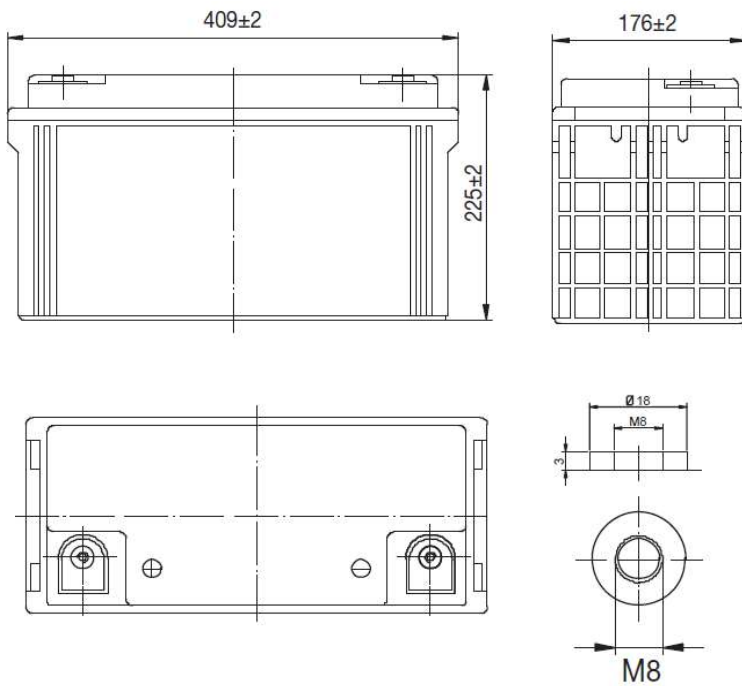


SUNLIGHT AccuForce 12V-120Ah

AGM VRLA Battery

Applications

- Uninterruptible Power Supplies (UPS)
- Electric Power Systems (EPS)
- Emergency backup power supplies
- Electronic apparatus and equipment
- Communication power supplies
- DC power supplies
- Auto control system



Specifications

Nominal Voltage	12 V	
Number of cells	6	
Design Floating Life (20°C)	10 years	
Dimensions	Length	409 mm
	Width	176 mm
	Height	225 mm
	Total Height	225 mm
Weight		34.0 kg
Nominal Capacity (25°C)	20 hours rate (1.80)	127.0 Ah
	10 hours rate (1.80)	120.0 Ah
	5 hours rate (1.75)	105.5 Ah
	1 hour rate (1.65)	75.1 Ah
Internal Resistance (fully charged, 25°C)	4.9 mOhms	
Self Discharge	approx. 3% per month at 25°C	
Nominal Operating Temperature	25°C	
Operating Temperature range	Discharge	-15°C to 45°C
	Charge	0°C to 40°C
	Storage	-15°C to 40°C
Float Charging Voltage	2.27 to 2.30 V/cell at 25°C Temperature compensation -18mV/°C	
Maximum charging current	30 A	
Maximum discharge current (25°C)	1200 A (5 sec.)	
Short Circuit Current	1800 A	

Performance Data

Discharge Constant Current at 25°C (Amperes)

End Voltage (V/cell)	5min	10min	15min	20min	30min	45min	1h	2h	3h	4h	5h	6h	8h	10h	20h
1.60 V	420	243	204	174	126	91.8	75.2	44.9	31.5	26.1	21.5	19.1	14.9	12.7	6.64
1.65 V	398	236	199	164	123	88.1	75.1	43.8	31.3	26.0	21.4	18.7	14.7	12.6	6.62
1.70 V	382	227	192	158	119	86.2	74.9	43.4	31.1	25.8	21.2	18.6	14.6	12.4	6.55
1.75 V	365	216	186	153	115	83.4	72.1	42.8	30.9	25.1	21.1	18.5	14.5	12.2	6.45
1.80 V	344	204	178	145	111	80.1	69.9	41.7	30.0	24.6	20.5	17.9	14.1	12.0	6.35

Discharge Constant Power at 25°C (Watts/Cell)

End Voltage (V/cell)	5min	10min	15min	20min	30min	45min	1h	2h	3h	4h	5h	6h	8h	10h	20h
1.60 V	744	434	372	312	229	172	148	86.6	62.9	51.4	42.5	37.6	29.2	25.5	13.3
1.65 V	720	421	368	303	224	167	143	85.0	62.5	51.1	42.3	37.0	29.1	25.1	13.2
1.70 V	690	403	357	291	217	163	140	84.2	62.1	50.5	42.0	36.8	28.9	24.9	13.1
1.75 V	660	386	341	281	212	159	138	83.0	61.6	49.1	41.7	36.5	28.7	24.4	12.9
1.80 V	623	364	320	267	204	153	134	80.8	59.4	48.3	40.5	35.4	27.9	24.0	12.7

Note: The above characteristics data can be obtained within three charge/discharge cycles.

SYSTEMS SUNLIGHT S.A.

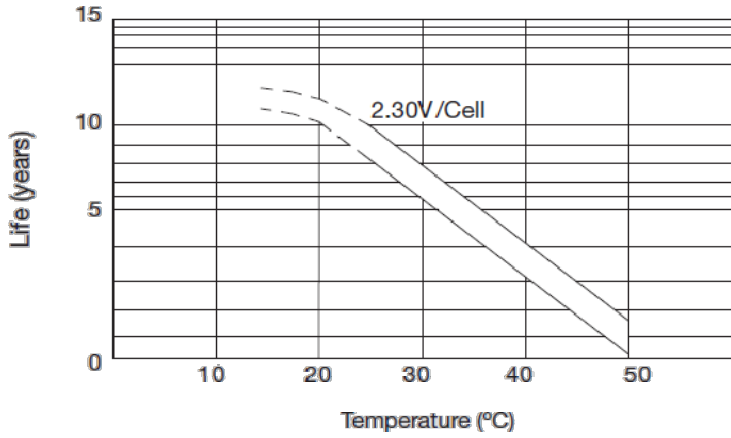
Headquarters 8, Thivaidos & Sfiggos Street | 145 64 Kifissia | Greece
 Manufacturing Plant Neo Olvio | 672 00 Xanthi | Greece
 Recycling Plant Industrial Area of Komotini | 691 00 Komotini | Greece
 Southeast Europe Industrial Sales 14B Menexedon Street | 145 64 Kato Kifissia | Greece

Sunlight Batteries USA Inc. 4755 McConnell Center Drive | Greensboro | NC 27405 | USA
 Sunlight European Battery Assembly 175, Via Stra | 37030 Colognola Ai Colli Verona | Italy
 Sunlight Industrial SRL 111-115, Timisoara Boulevard | 061327 Bucharest | Romania
www.systems-sunlight.com

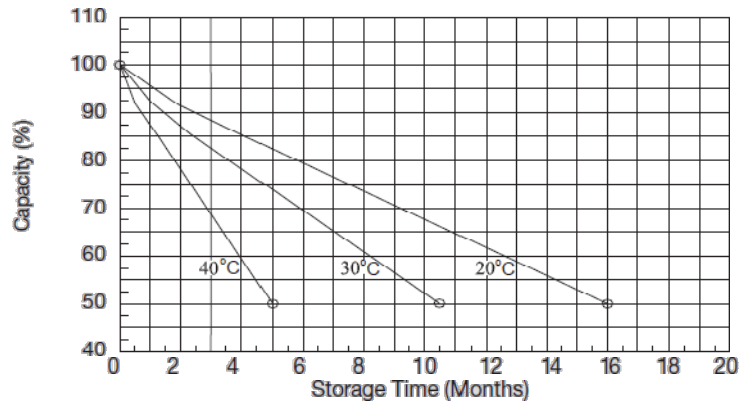
SUNLIGHT AccuForce 12V-120Ah

AGM VRLA Battery

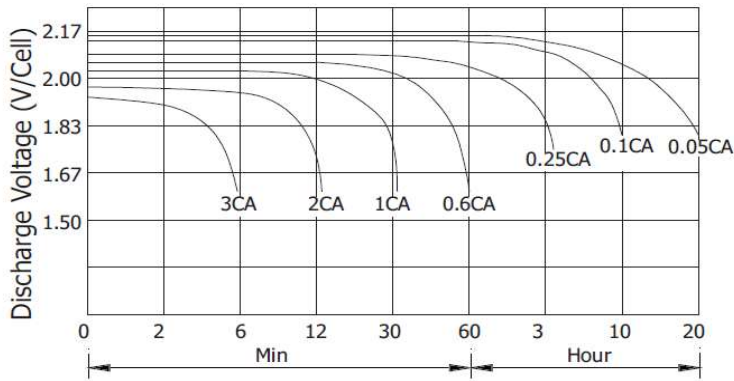
Temperature Effects on Float Life



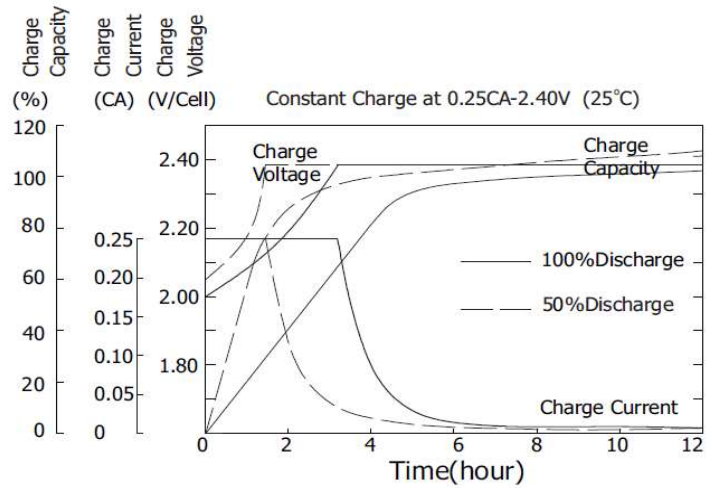
Self Discharge Characteristics



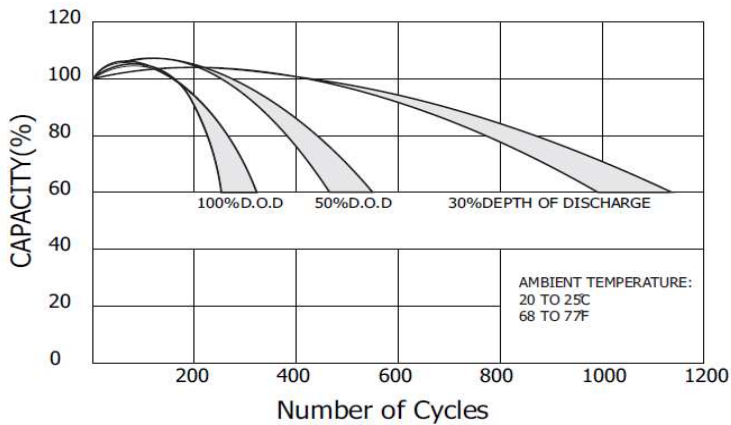
Discharge Characteristics (25°C)



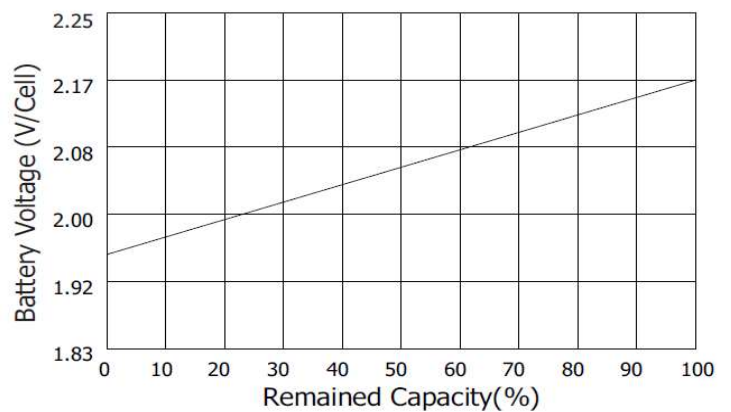
Charging Characteristics (25°C)



Cycle Service Life in Relation to Depth of Discharge



Relationship Between OCV and Residual Capacity (25°C)



SYSTEMS SUNLIGHT S.A.

Headquarters 8, Thivaídos & Sfiggos Street | 145 64 Kifissia | Greece
 Manufacturing Plant Neo Olvio | 672 00 Xanthi | Greece
 Recycling Plant Industrial Area of Komotini | 691 00 Komotini | Greece
 Southeast Europe Industrial Sales 14B Menexedon Street | 145 64 Kato Kifissia | Greece

Sunlight Batteries USA Inc. 4755 McConnell Center Drive | Greensboro | NC 27405 | USA
 Sunlight European Battery Assembly 175, Via Stra | 37030 Colognola Ai Colli Verona | Italy
 Sunlight Industrial SRL 111-115, Timisoara Boulevard | 061327 Bucharest | Romania
www.systems-sunlight.com