

THE UNIVERSAL MODULE



ULTRA-LIGHTWEIGHT
Only 3.3 kg/m²



HIGH-EFFICIENCY
Monocrystalline cells
No thin film!



UNIQUE "LOW DEGRADATION" WARRANTY
Minimum 85 % yield after 40 years



**PATENTED MULTI-LAYER
CELL ENCAPSULATION**
Maximal microcrack protection
Increased longevity



ETFE FRONT SHEET
Soil-repellent (high self-cleaning effect)
UV & salt resistant
Optimal heat dissipation



HIGH YIELD IN ANY POSITION
Multi-directional lens structure



BENDABLE
Smallest bending diameter (2 m)



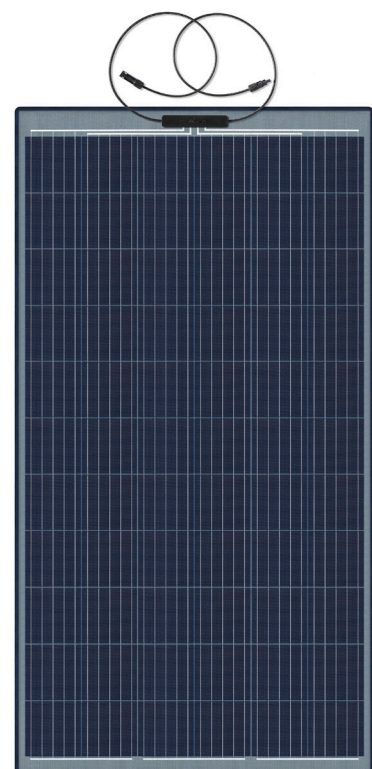
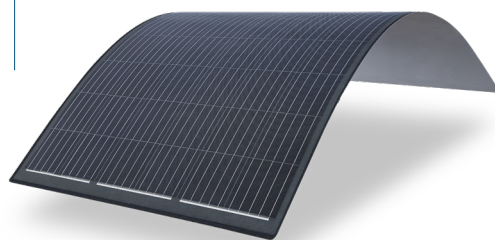
EASY TO INSTALL
Simple but strong adhesive bonding
No metal subsystem required
No ballast required



TAILOR-MADE OPTIONS AVAILABLE
Sizing to your requirement
Transparent back sheet



EXTREME WEATHER CONDITIONS
Even in heat, sandstorms and dusty
conditions, the module provides stable
and durable performance



THERMAL CHARACTERISTICS

Operating temperature range	-40°C to +85°C
Temperature coefficient P _{mpp}	-0.38 % / °C
Temperature coefficient V _{oc}	-0.36 % / °C
Temperature coefficient I _{sc}	+0.07 % / °C

TECHNICAL DATA

Solar cells	5BB monocrystalline solar cells
Maximum system voltage	1000 V
Maximum overcurrent protection rating	20 A
I _{sc}	9.28 A
I _{mp}	8.86 A
Weight	3.3 kg/m ²
Front sheet	Soil-repellent ETFE
Encapsulation	Patented fiberglass-reinforced plastic
Back sheet	High-resistance PET
Junction box	TÜV-certified (IP67/68) with bypass diodes
Cables	2 x 4 mm ²
Connector	RJB PV4-5 / FJB original MC4-Evo2

RJB: rear junction box FJB: front junction box

THE UNIVERSAL MODULE

Available standard sizes

ULTRA-LIGHTWEIGHT

HIGH-EFFICIENCY SILICON CELL TECHNOLOGY

UNIQUE "LOW DEGRADATION" WARRANTY

PATENTED MULTI-LAYER CELL ENCAPSULATION

ETFE FRONT SHEET

HIGH YIELD IN ANY POSITION

BENDABLE

EASY TO INSTALL

TAILOR-MADE OPTIONS AVAILABLE

EXTREME WEATHER CONDITIONS

Length FJB & RJB	2035 mm	12	12 x 1 M 60 Wp 8,25 Voc 6,83 Vmp	12 x 2 M 120 Wp 16,50 Voc 13,67 Vmp					
	1917 mm	11	11 x 1 M 55 Wp 7,56 Voc 6,26 Vmp	11 x 2 M 110 Wp 15,13 Voc 12,53 Vmp	11 x 3 M 165 Wp 22,69 Voc 18,80 Vmp	11 x 4 M 220 Wp 30,26 Voc 25,06 Vmp	11 x 5 M 275 Wp 37,83 Voc 31,33 Vmp	11 x 6 M 330 Wp 45,39 Voc 37,60 Vmp	
	1756 mm	10	10 x 1 M 50 Wp 6,87 Voc 5,69 Vmp	10 x 2 M 100 Wp 13,75 Voc 11,39 Vmp	10 x 3 M 150 Wp 20,63 Voc 17,09 Vmp	10 x 4 M 200 Wp 27,51 Voc 22,78 Vmp	10 x 5 M 250 Wp 34,39 Voc 28,48 Vmp	10 x 6 M 300 Wp 41,26 Voc 34,18 Vmp	
	1595 mm	9	9 x 1 M 45 Wp 6,19 Voc 5,12 Vmp	9 x 2 M 90 Wp 12,38 Voc 10,25 Vmp	9 x 3 M 135 Wp 18,57 Voc 15,38 Vmp	9 x 4 M 190 Wp 24,76 Voc 20,50 Vmp	9 x 5 M 225 Wp 30,95 Voc 25,63 Vmp	9 x 6 M 270 Wp 37,14 Voc 30,76 Vmp	
	1434 mm	8	8 x 1 M 40 Wp 5,50 Voc 4,55 Vmp	8 x 2 M 80 Wp 11,00 Voc 9,11 Vmp	8 x 3 M 120 Wp 16,50 Voc 13,67 Vmp	8 x 4 M 160 Wp 22,01 Voc 18,23 Vmp	8 x 5 M 200 Wp 27,51 Voc 22,78 Vmp	8 x 6 M 240 Wp 33,01 Voc 27,34 Vmp	
	1274 mm	7	7 x 1 M 35 Wp 4,81 Voc 3,98 Vmp	7 x 2 M 70 Wp 9,62 Voc 7,97 Vmp	7 x 3 M 105 Wp 14,44 Voc 11,96 Vmp	7 x 4 M 140 Wp 19,25 Voc 15,95 Vmp	7 x 5 M 175 Wp 24,07 Voc 19,93 Vmp	7 x 6 M 210 Wp 28,88 Voc 23,92 Vmp	
	1113 mm	6	6 x 1 M 30 Wp 4,12 Voc 3,41 Vmp	6 x 2 M 60 Wp 8,25 Voc 6,83 Vmp	6 x 3 M 90 Wp 12,38 Voc 10,25 Vmp	6 x 4 M 120 Wp 16,50 Voc 13,67 Vmp	6 x 5 M 150 Wp 20,63 Voc 17,09 Vmp	6 x 6 M 180 Wp 24,76 Voc 20,50 Vmp	
				1	2	3	4	5	6
				227 mm	377 mm	548 mm	699 mm	870 mm	1020 mm
	Thickness 2 mm ± 0.3			Width					

RJB = rear junction box FJB = front junction box

APPLICATIONS

Building-integrated and building-applied PV (rooftop, facade), special applications

POWER RANGE 20 - 350 Wp

Tolerances*
 ≥ 250 Wp: - 0 / + 10 W
 < 250 Wp: - 5 / + 5 W
 Ics: +/- 10 %
 Voc: +/- 10 %

* all electrical data at STC (1,000 W/m², 25 +/- 2 °C, AM 1.5 according to IEC 60904-3)

HIGH RELIABILITY

Compliant with:
 IEC 61730 | IEC 61215
 IEC 62804-1 Potential-induced degradation
 IEC 61701 Salt mist corrosion
 IEC 62716 Ammonia corrosion
 EN 13501-5 B_{ROOF} (t1) "Flying sparks test"

WARRANTY

10-year product warranty
 40-year linear performance warranty for building-integrated and building-applied installations

SCIENTIFIC PARTNERS AND ASSOCIATIONS



Phone / +43 2622 35035 0
 E-Mail / office@das-energy.com
 Web / www.das-energy.com



Ferdinand Graf von Zeppelin-Straße 18
 2700 Wiener Neustadt, Austria