

Product overview

Batteries for Marine and Leisure

Dual ER350

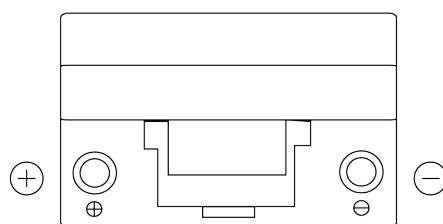


Product registered and
ncc verified
www.thencc.org.uk

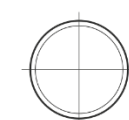
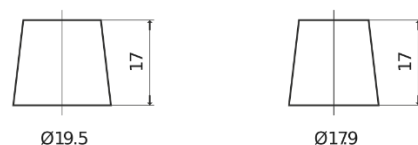


Part number	ER350
Technology	Flooded
EAN/GTIN	3661024036009
Voltage	12 V
Capacity	80 Ah
CCA	510 A
Watt hour	350 Wh
Length	270 mm
Width	173 mm
Height	222 mm
Box size	D26
Polarity	ETN 1
Terminal Type	EN taper post
Hold Down	Korean B1+B6
Weights (subject of variation)	17.40 kg

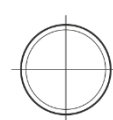
Polarity



Terminal Type

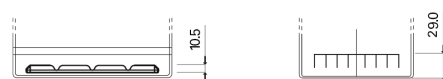


Positive Terminal



Negative Terminal

Hold Down



Design, features and specifications are subject to change without notice. We disclaim any representation or warranty, express or implied, concerning the data or recommendations, and in no event shall be liable for any loss or damage claimed to have arisen as a result. Some products may not be available in your local market.